

EXTERNAL LINKS

HD674-A036-E4x-xx



QR of Manual

[www.adfweb.com/download/
filefold/MN674-A036_ENG.pdf](http://www.adfweb.com/download/filefold/MN674-A036_ENG.pdf)



QR of Box-Sheet

[www.adfweb.com/download/
filefold/BS674-A036-E4x_
ENG.pdf](http://www.adfweb.com/download/filefold/BS674-A036-E4x_ENG.pdf)



QR of Software

[www.adfweb.com/download/
filefold/SW674-A036.zip](http://www.adfweb.com/download/filefold/SW674-A036.zip)

HD674-A036-E4x-xx

BOX SHEET

Modbus master RS485/ MQTT

Box Sheet for Order code: HD674-A036-E4x-xx
Document code: BS674-A036-E4x
V1.000



ADFweb.com srl

Strada Nuova, 17, IT-31010 Mareno di Piave, Treviso - Italy

www.ADFweb.com

CONNECTION SCHEME

Order code: HD674-A036-E4x-xx

Connector3:

RS485 port



+ = Positive wire
- = Negative wire
Shl = Shield (to Isolated Ground)

Connector2:

Ethernet Port
(RJ45 Plug)

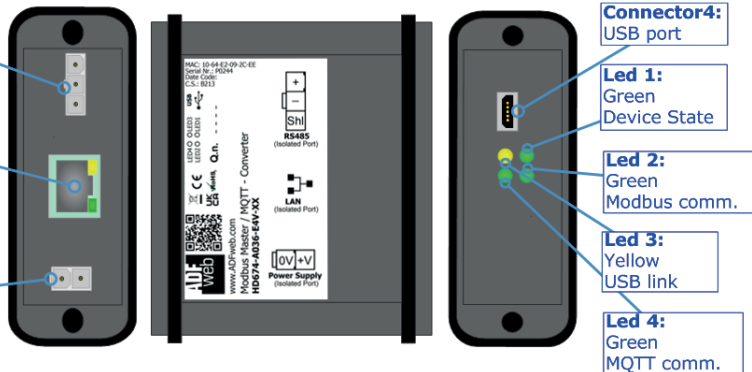
Connector1:

Power Supply port



0V = Ground
+V = Positive wire

V AC: min 8V ; max 26V
V DC: min 10V ; max 40V



Order code: HD674-A036-E4x-xx