

User Manual

Revision 2.002
English

PROFIBUS Slave / Ethernet - Converter

(Order Code: HD67576-A1)

for Website information:

<http://www.adfweb.com/?Product=HD67576>

for Price information:

<http://www.adfweb.com/?Price=HD67576-A1>

Benefits and Main Features:

- ▶ Very easy to configure
- ▶ Low cost
- ▶ Industrial temperature range:
-40°C / 85°C (-40°F / 185°F)

For others PROFIBUS devices, see also the following links:

PROFIBUS Slave from/to ...

- | | |
|--|---------------------------------|
| www.adfweb.com?Product=HD67045 | (... Serial) |
| www.adfweb.com?Product=HD67053 | (... M-Bus Master) |
| www.adfweb.com?Product=HD67551 | (... CANopen) |
| www.adfweb.com?Product=HD67552 | (... CAN) |
| www.adfweb.com?Product=HD67553 | (... J1939) |
| www.adfweb.com?Product=HD67554 | (... DeviceNet Slave) |
| www.adfweb.com?Product=HD67555 | (... DeviceNet Master) |
| www.adfweb.com?Product=HD67561 | (... Modbus Master) |
| www.adfweb.com?Product=HD67562 | (... Modbus Slave) |
| www.adfweb.com?Product=HD67563 | (... Ethernet Server) |
| www.adfweb.com?Product=HD67564 | (... Modbus TCP Client) |
| www.adfweb.com?Product=HD67565 | (... Modbus TCP Server) |

PROFIBUS MASTER from/to ...

- | | |
|--|-------------------------------|
| www.adfweb.com?Product=HD67575 | (... Ethernet Server) |
|--|-------------------------------|

Do you have an your customer protocol?

See the following links:

www.adfweb.com?Product=HD67003

Do you need to choose a device? do you want help?

Ask it to the following link:

www.adfweb.com?Cmd=helpme

INDEX:

	Page
INDEX	2
UPDATED DOCUMENTATION	2
REVISION LIST	2
WARNING	2
TRADEMARKS	2
SECURITY ALERT	3
EXAMPLES OF CONNECTION	4
CONNECTION SCHEME	5
CHARACTERISTICS	6
CONFIGURATION	6
POWER SUPPLY	7
FUNCTION MODES	8
LEDS	9
PROFIBUS	10
ETHERNET	10
USE OF COMPOSITOR SW67576	11
NEW PROJECT / OPEN PROJECT	11
SET COMMUNICATION	12
PROFIBUS NETWORK	13
MASTER PROFIBUS OPTIONS	14
PROFIBUS DEVICE	15
- MODULE SELECTION	16
- USER PARAMETERS	18
- MODULE PARAMETERS	20
- CAPABILITIES	21
- OPTIONS	22
UPDATE DEVICE	23
ETHERNET PROTOCOL	25
MECHANICAL DIMENSIONS	27
ORDER CODE	27
ACCESSORIES	27
DISCLAIMER	28
OTHER REGULATIONS AND STANDARDS	28
WARRANTIES AND TECHNICAL SUPPORT	29
RETURN POLICY	29
PRODUCTS AND RELATED DOCUMENTS	29

UPDATED DOCUMENTATION:

Dear customer, we thank you for your attention and we remind you that you need to check that the following document is:

- Updated;
- Related to the product you own.

To obtain the most recently updated document, note the “document code” that appears at the top right-hand corner of each page of this document.

With this “Document Code” go to web page www.adfweb.com/download/ and search for the corresponding code on the page. Click on the proper “Document Code” and download the updates.

To obtain the updated documentation for the product that you own, note the “Document Code” (Abbreviated written "Doc. Code" on the label on the product) and download the updated from our web site www.adfweb.com/download/

REVISION LIST:

Revision	Date	Author	Chapter	Description
1.010	02/04/2012	FI	All	Software changed (v1.000)
2.000	22/08/2012	FI	All	Software changed (v1.100)
2.001	09/01/2013	Nt	All	Added new chapters
2.002	23/07/2013	FI	All	Add second Example of con.

WARNING:

ADFweb.com reserves the right to change information in this manual about our product without warning.
ADFweb.com is not responsible for any error this manual may contain.

TRADEMARKS:

All trademarks mentioned in this document belong to their respective owners.

SECURITY ALERT:**GENERAL INFORMATION**

To ensure safe operation, the device must be operated according to the instructions in the manual. When using the device are required for each individual application, legal and safety regulation. The same applies also when using accessories.

INTENDED USE

Machines and systems must be designed so the faulty conditions do not lead to a dangerous situation for the operator (i.e. independent limit switches, mechanical interlocks, etc.).


QUALIFIED PERSONNEL

The device can be used only by qualified personnel, strictly in accordance with the specifications.

Qualified personnel are persons who are familiar with the installation, assembly, commissioning and operation of this equipment and who have appropriate qualifications for their job.

RESIDUAL RISKS

The device is state of the art and is safe. The instrument can represent a potential hazard if they are inappropriately installed and operated by personnel untrained. These instructions refer to residual risks with the following symbol:

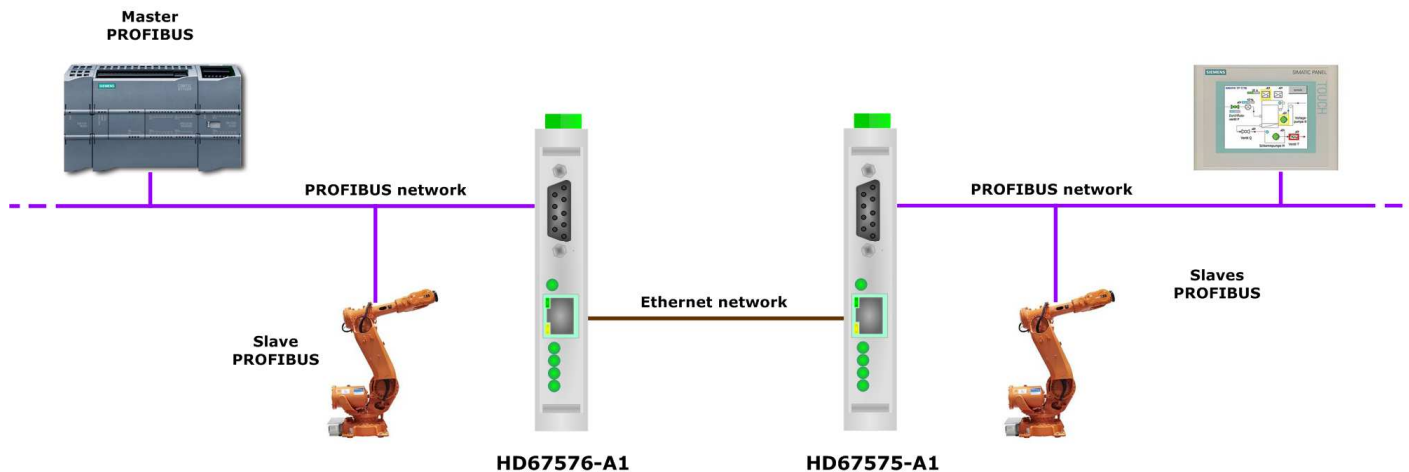
 This symbol indicates that non-observance of the safety instructions is danger for people to serious injury or death and / or the possibility of damage.

CE CONFORMITY

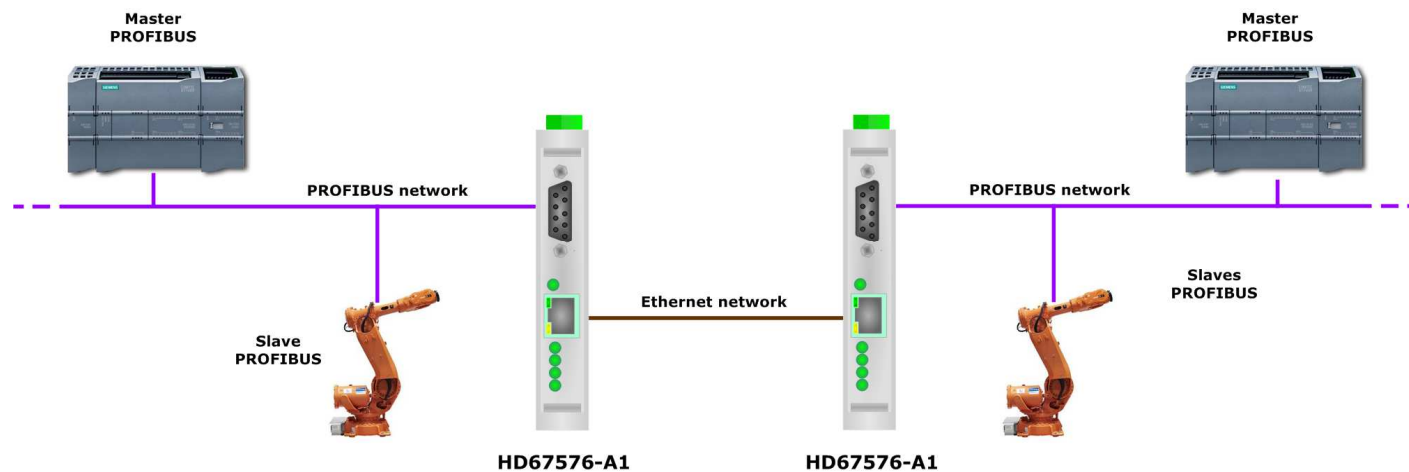
The declaration is made by us. You can send an email to support@adfweb.com or give us a call if you need it.

EXAMPLE OF CONNECTION:

Used in pair with the HD67575-A1, allows to make a tunneling over Ethernet, you can also connect them to Internet.



Used in pair with another HD67576-A1, allows to interface two Masters PROFIBUS, extending the PROFIBUS network through Ethernet network.



CONNECTION SCHEME:

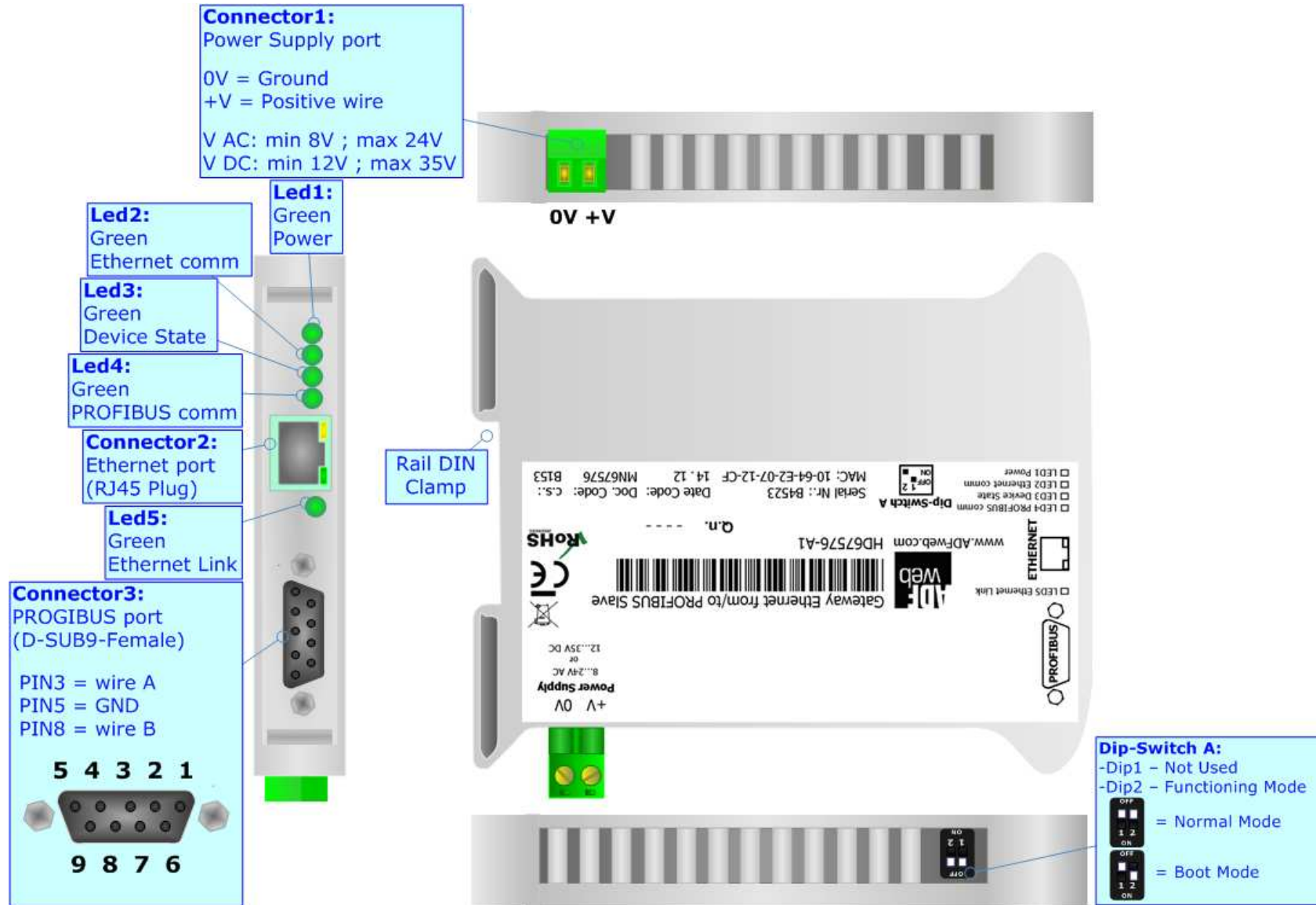


Figure 1: Connection scheme for HD67576-A1

CHARACTERISTICS:

The configurable "PROFIBUS Slave / Ethernet – Converter" allows the following characteristics:

- UDP protocol at Ethernet side;
- Mountable on 35mm Rail DIN;
- Power Supply 8...24V AC or 12...35V DC;
- Temperature range -40°C to 85°C.

CONFIGURATION:

You need Compositor SW67576 software on your PC in order to perform the following:

- Define the parameter of the PROFIBUS;
- Define the parameter of the Ethernet line;
- Define the PROFIBUS network.

POWER SUPPLY:

The devices can be powered between a wide range of tensions. For more details see the two tables below.

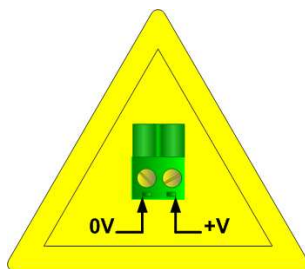
	VAC		VDC	
	Vmin	Vmax	Vmin	Vmax
HD67576-A1	8V	24V	12V	35V

Consumption at 24V DC:

Device	W/VA
HD67576-A1	4



Caution: Not reverse the polarity power



HD67576-A1

Connector1:
 Power Supply port
 0V = Ground
 +V = Positive wire
 V AC: min 8V ; max 24V
 V DC: min 12V ; max 35V



FUNCTION MODES:

The device has got two functions mode depending of the position of the Dip2 of 'Dip-Switch A':

- The first, with Dip2 in Off position (factory setting), is used for the normal working of the device.
- The second, with Dip2 in On position, is used for upload the Project/Firmware.



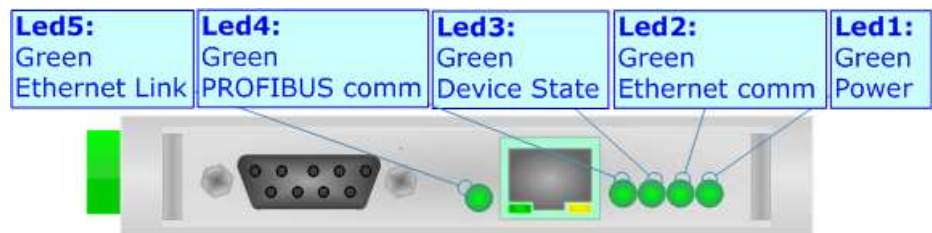
For the operations to follow for the updating (see 'UPDATE DEVICE' section).

According to the functioning mode, the LEDs will have specifics functions (see 'LEDS' section).

LEDS:

The device has got five LEDs that are used to give information of the functioning status.
The various meanings of the LEDs are described in the table below.

LED	Normal Mode	Boot Mode
1: Power (green)	ON: Powered OFF: Not powered	ON: Powered OFF: Not powered
2: Ethernet comm (green)	Blinks quickly when receive Ethernet commands	Blinks quickly: Boot state Blinks very slowly (~0.5Hz): update in progress
3: Device State (green)	Blinks slowly (~1Hz)	Blinks quickly: Boot state Blinks very slowly (~0.5Hz): update in progress
4: PROFIBUS comm (green)	Blinks quickly when there is PROFIBUS communication	Blinks quickly: Boot state Blinks very slowly (~0.5Hz): update in progress
5: Ethernet Link (green)	ON: Ethernet cable connected OFF: Ethernet cable disconnected	ON: Ethernet cable connected OFF: Ethernet cable disconnected

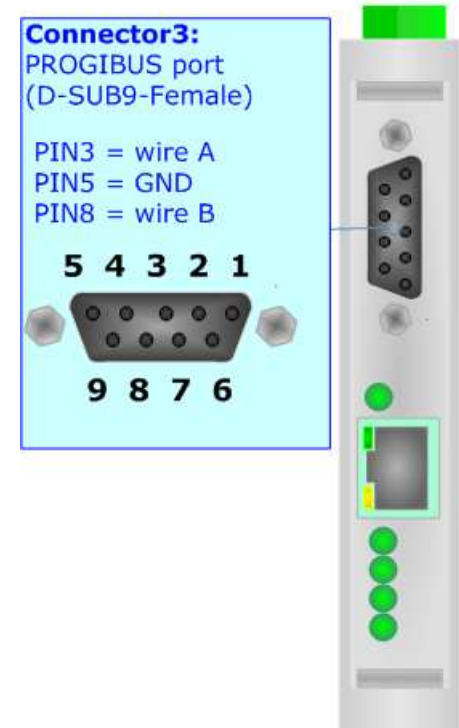


PROFIBUS:

The PROFIBUS uses a 9-pin D-SUB connector. The pin assignment is defined like in the right figure.

Here some codes of cables:

- Belden: p/n 183079A - Continuous Armor DataBus® ISA/SP-50 PROFIBUS Cable.



ETHERNET:

The Ethernet connection must be made using Connector3 of HD67576-A1 with at least a Category 5E cable. The maximum length of the cable should not exceed 100m. The cable has to conform to the T568 norms relative to connections in cat.5 up to 100 Mbps. To connect the device to an Hub/Switch is recommended the use of a straight cable, to connect the device to a PC/PLC/other is recommended the use of a cross cable.



USE OF COMPOSITOR SW67576:

To configure the Gateway, use the available software that runs with Windows, called SW67576. It is downloadable on the site www.adfweb.com and its operation is described in this document. (This manual is referenced to the last version of the software present on our web site). The software works with MSWindows (MS 2000, XP, Vista, Seven, 8).

When launching the SW67576 the right window appears (Fig. 2).

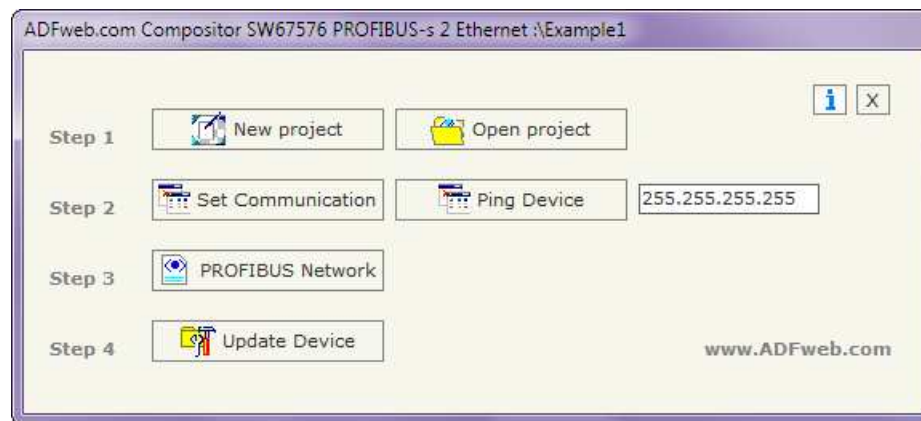


Figure 2: Main window for SW67576

NEW PROJECT / OPEN PROJECT:

The **"New Project"** button creates the folder which contains the entire device configuration.



A device configuration can also be imported or exported:

- ✦ To clone the configurations of a Programmable "PROFIBUS Slave / Ethernet - Converter" in order to configure another device in the same manner, it is necessary to maintain the folder and all its contents;
- ✦ To clone a project in order to obtain a different version of the project, it is sufficient to duplicate the project folder with another name and open the new folder with the button **"Open Project"**.

SET COMMUNICATION:

This section defines the fundamental communication parameter of two buses, PROFIBUS and Ethernet.

By pressing the **"Set Communication"** button from the main window for SW67576 (Fig. 2) the window "Set Communication" appears (Fig. 3).

The window is divided in two sections, one for the PROFIBUS and the other for the Ethernet.

The means of the fields for "PROFIBUS" are:

- In the field **"ID Dev."** The address of the PROFIBUS side is defined;
- In the field **"Baud rate"** the baud rate for the PROFIBUS side is defined;

The means of the fields for "Ethernet" are:

- In the field **"IP ADDRESS"** insert the IP address;
- In the field **"SUBNET Mask"** insert the Subnet mask;
- If the **"GATEWAY"** field is checked it is possible to insert, in the field under, the IP Address for going out to the net;
- In the field **"Port"** insert the number of the port;
- In the field **"COMPANION BOARD IP ADDRESS"** insert the IP address of the Ethernet Server device that communicates with the HD67576;
- In the field **"COMPANION Port"** insert the number of the port of the Ethernet Server device that communicates with the HD67576.

The screenshot shows a dialog box titled "SET COMMUNICATION". It is divided into two main sections: "PROFIBUS" and "Ethernet".

PROFIBUS section:

- Field "ID Dev.": contains the value "1".
- Field "Baudrate": contains the value "6.0M".

Ethernet section:

- Section "IP ADDRESS": contains four input fields with values "192", ".168", ".0", ".59".
- Section "SUBNET Mask": contains four input fields with values "255", ".255", ".255", ".0".
- Section "GATEWAY": has a checked checkbox and four input fields with values "192", ".168", ".0", ".1".
- Field "Port": contains the value "10001".
- Section "COMPANION BOARD IP ADDRESS": contains four input fields with values "192", ".168", ".0", ".10".
- Field "Port": contains the value "10002".

At the bottom of the dialog are two buttons: "OK" (with a green checkmark icon) and "Cancel" (with a red X icon).

Figure 3: "Set Communication" window

PROFIBUS NETWORK:

By pressing the "**PROFIBUS Network**" button from the main window for SW67576 (Fig. 2) the window "PROFIBUS Network" (Fig. 4) appears.

In this window is possible to:

- Modify the PROFIBUS Master Options ("**Master PROFIBUS Options**");
- Add a PROFIBUS Slave in the Network ("**Add Slave PROFIBUS**");
- Modify a PROFIBUS Slave in the Network ("**Modify Slave PROFIBUS**");
- Remove a PROFIBUS Slave from the Network ("**Remove Slave PROFIBUS**").



Figure 4: "PROFIBUS Network" window

MASTER PROFIBUS OPTIONS:

By pressing the "**Master PROFIBUS Options**" button from the "PROFIBUS Network" window (Fig. 4) the "PROFIBUS Master Options" window appears (Fig. 5).

In this window is possible to set the WatchDog Time for the PROFIBUS Slaves.



Figure 5: "PROFIBUS Master Options" window

**Note:**

Fact1 and Fact2 could be write in decimal o hexadecimal (with prefix "0x" or "\$") and the values must be between 1 and 255

**Warning:**

The WatchDog time must be between 200 and 650250 milliseconds.

PROFIBUS DEVICE:

By pressing the "Add Slave PROFIBUS" and "Modify Slave PROFIBUS" button (or double click above an existent PROFIBUS Slave) from the "PROFIBUS Network" window (Fig. 4) the "PROFIBUS Device" window appears (Fig. 6).

In this window is possible to:

- Set the PROFIBUS Slave ID ("ID Slave PROFIBUS");
- Select the Modules present in the PROFIBUS Slave from the Available Modules in GSD file ("Module Selection");
- Modify the User Parameters (if present) of the PROFIBUS device ("User Parameters");
- Modify the Parameters (if present) of the Module Selected ("Module Parameters");
- Watch Features and Baudrate supported from the PROFIBUS device ("Capabilities");
- Select the Sync, Freeze and Reset of Data Options ("Options").

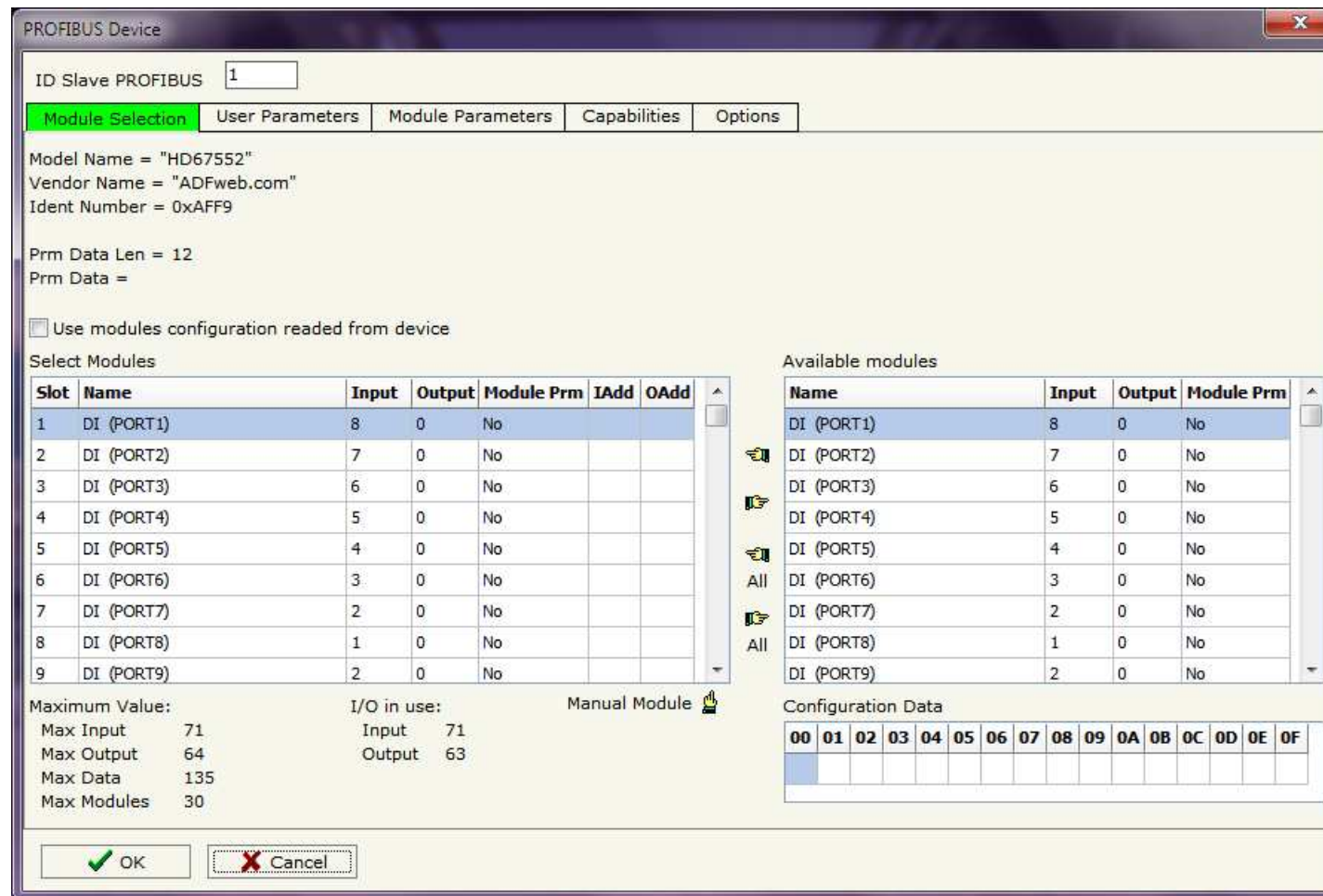


Figure 6: "PROFIBUS Device" window

MODULE SELECTION:

The section "Module Selection" is used to select which Modules are present in the Slave (Fig. 7).

In this section is possible to:

- Check the list of the Modules selected ("Select Modules") (Fig. 7, point (1)) and the list of Modules Available in GSD file ("Available Modules") (Fig. 7, point (7));
- Add a Module from the list of GSD file (Fig. 7, point (6));
- Remove a Module from selected list (Fig. 7, point (5));
- Add all Modules present in the GSD file (Fig. 7, point (4));
- Remove all Modules from selected list (Fig. 7, point (3));
- Insert a Module not present in the GSD file ("**Manual Module**") (Fig. 7 point (2)). For more info see the section "Manual Module" below;
- Enable the read of configuration directly from the PROFIBUS Slave ("**Use module configuration readed from device**") (Fig 7, point (8)). If this option is enable the configuration of the modules is discarded and the device read the correct configuration directly to the PROFIBUS slave.

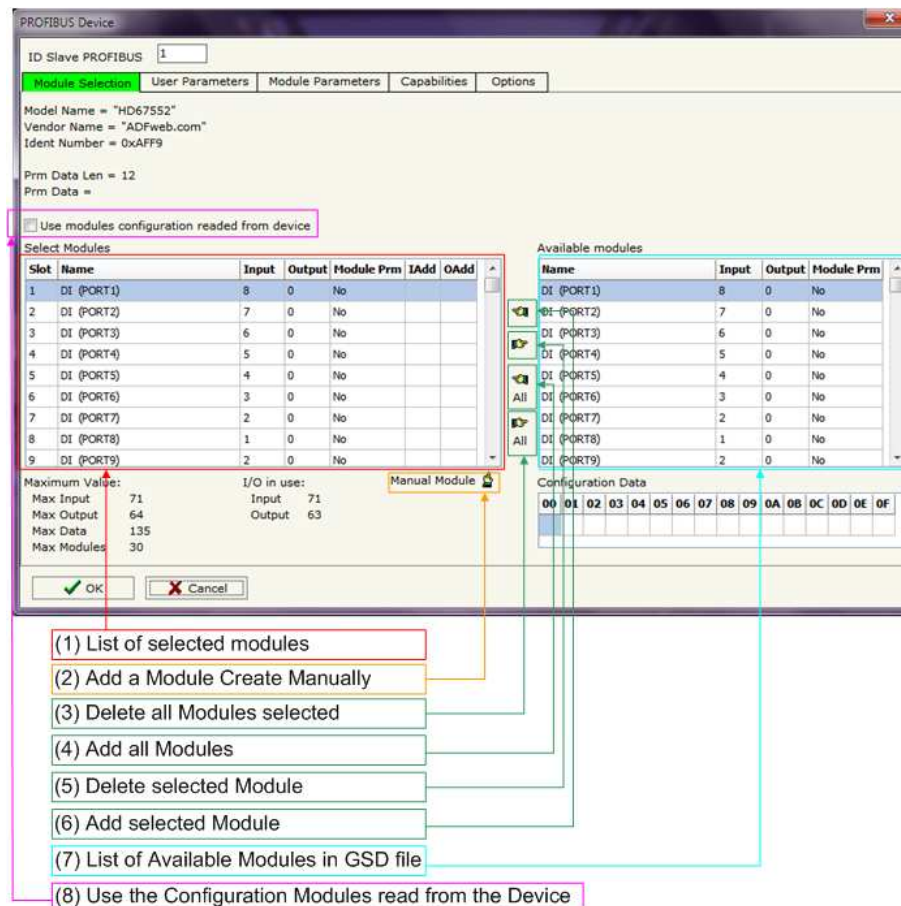


Figure 7: "PROFIBUS Device – Module Selection" window

By pressing the **Manual Module** button from the "PROFIBUS Device" window (Fig. 6) the "Add Module Manually" window appears (Fig. 8).

In this window is possible to add a Module manually, i.e. writing the configuration of the module (in hexadecimal).

The means of the fields are:

- In the field **Description of Module** a name of the Module is defined;
- In the field **Insert the Configuration of Module (HEX)** the configuration of the module is defined. The configuration must be write in hexadecimal mode (without prefix "0x" o "\$").

To modify a Module inserted manually, is necessary to do a double click on the module to change in the "Select Module" list (Fig. 7, point (1)). It is possible to change only the module inserted manually.



Note:

The Values inserted in the table must between 00 and FF

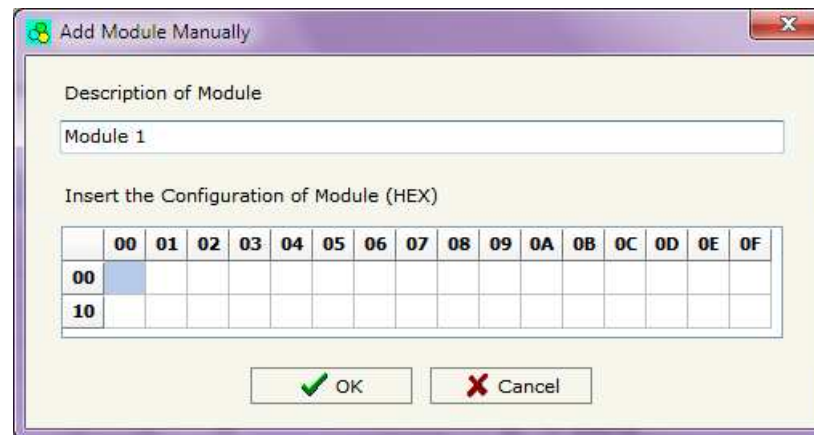


Figure 8: "Add/Modify Module Manually" window

USER PARAMETERS:

The section "User Parameters" is used to modify the parameters of the PROFIBUS slave (Fig. 9).

In this section there are:

- The List of all Parameters available for the PROFIBUS device ("User Parameters") (Fig. 9, point (1));
- The Configuration of all parameters in RAW ("Parameters in RAW (Hex)") (Fig. 9, point(2));
- The "Use Parameter Inserted Manually", enable this option is possible to insert manually the parameters of Device and also of the Modules. Using the "Modify User Parameters Manually" button is possible to insert/modify the parametrization of the device (and/or modules). For more info see below. (Fig. 9, point(3));
- The admitted value for the selected parameter. It is possible to select the value desired and confirm it with the "Apply" button. If no value appears in this table, the "Min Value" and "Max Value" are the limit of the parameter. (Fig. 9, point(4));
- The "Apply" button is used to confirm the new value of the parameter, the "Default" button is used to load the factory value for the parameter. In "New Value" edit box it is possible to set the new value. (Fig. 9, point(5)).

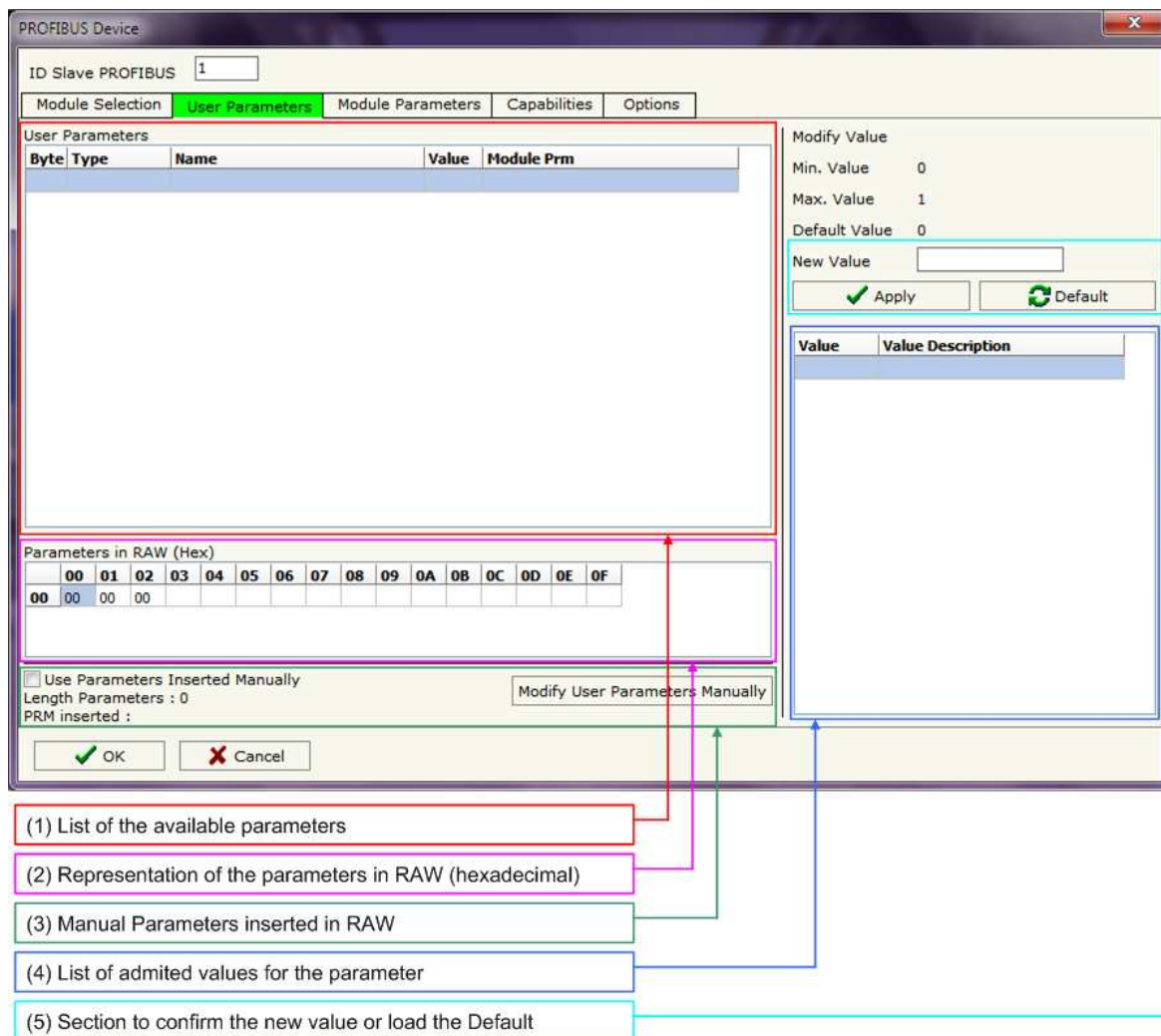


Figure 9: "PROFIBUS Device – User Parameters" window

By pressing the **“Modify User Parameters Manually”** button from the “PROFIBUS Device” window (Fig. 6) the “Add Module Manually” window appears (Fig. 10).

In this window is possible to add/modify the User and/or Modules Parameters manually, i.e. writing the configuration of the parameters (in hexadecimal).

The means of the fields are:

- In the field **“Insert the number of User Parameter”** the number of byte for the parameter have to be inserted;
- In the field **“Insert the Configuration of Module (HEX)”** the configuration of the User and/or Modules Parameters is defined. The configuration must be write in hexadecimal mode (without prefix “0x” o “\$”).



Note:

The Values inserted in the table must between 00 and FF

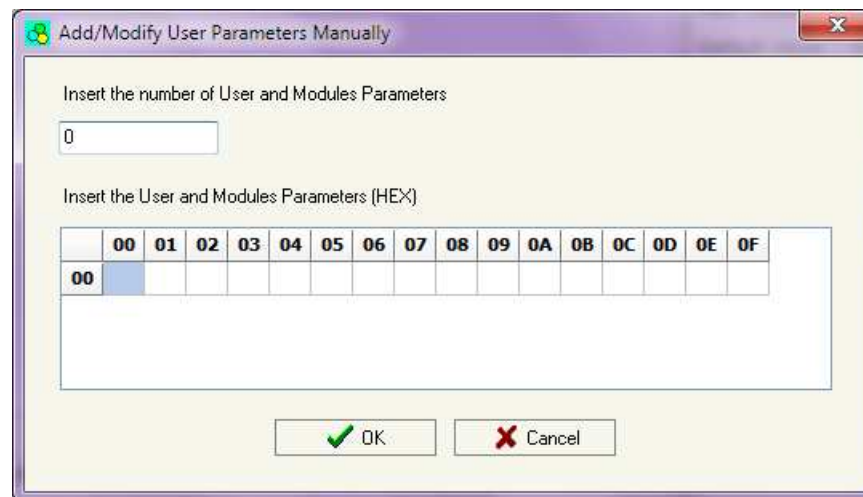


Figure 10: “Add/Modify User Parameters Manually” window

MODULE PARAMETERS:

The section "Module Parameters" is used to modify the parameters of the Modules (Fig. 11).

In this section there are:

- The List of all Module selected in the GSD file ("Available modules") (Fig. 11, point (1));
- The List of all Parameters available for the Module selected ("Parameters of module") (Fig. 11, point (2));
- The Configuration of all parameters in RAW for the Module selected ("Parameters in RAW (Hex)") (Fig. 11, point(3));
- The admitted value for the selected parameter. It is possible to select the value desired and confirm it with the "Apply" button. If no value appears in this table, the "Min Value" and "Max Value" are the limit of the parameter. (Fig. 11, point(4));
- The "Apply" button is used to confirm the new value of the parameter, the "Default" button is used to load the factory value for the parameter. In "New Value" edit box it is possible to set the new value. (Fig. 11, point(5));

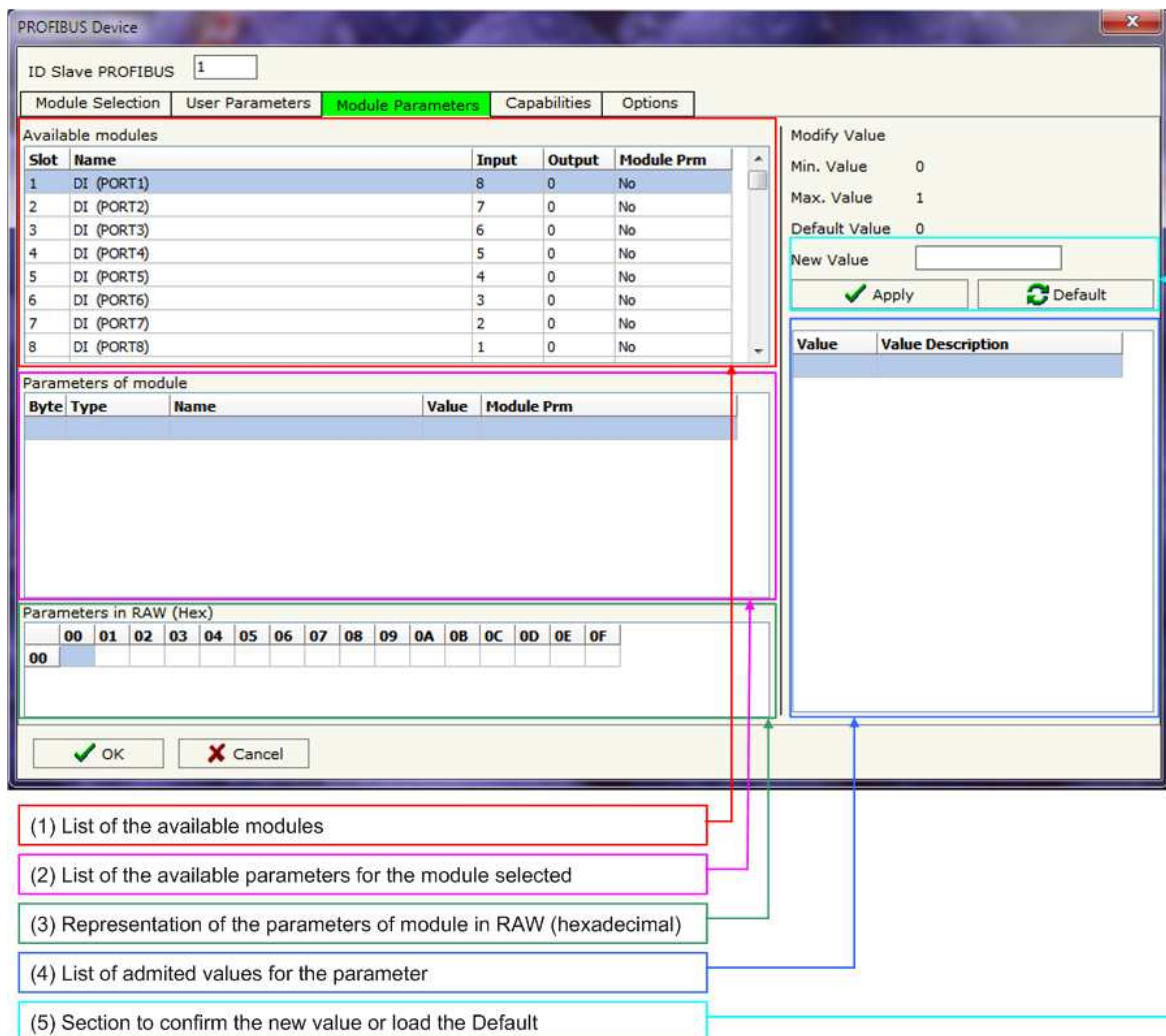


Figure 11: "PROFIBUS Device – Module Parameters" window

CAPABILITIES:

The section "Capabilities" is used only to show which features/baudrates available in the PROFIBUS device. The Green Icon indicate that capability/baudrate is available, the Red Icon indicate no compatibilities with that capability/baudrate (Fig. 12).

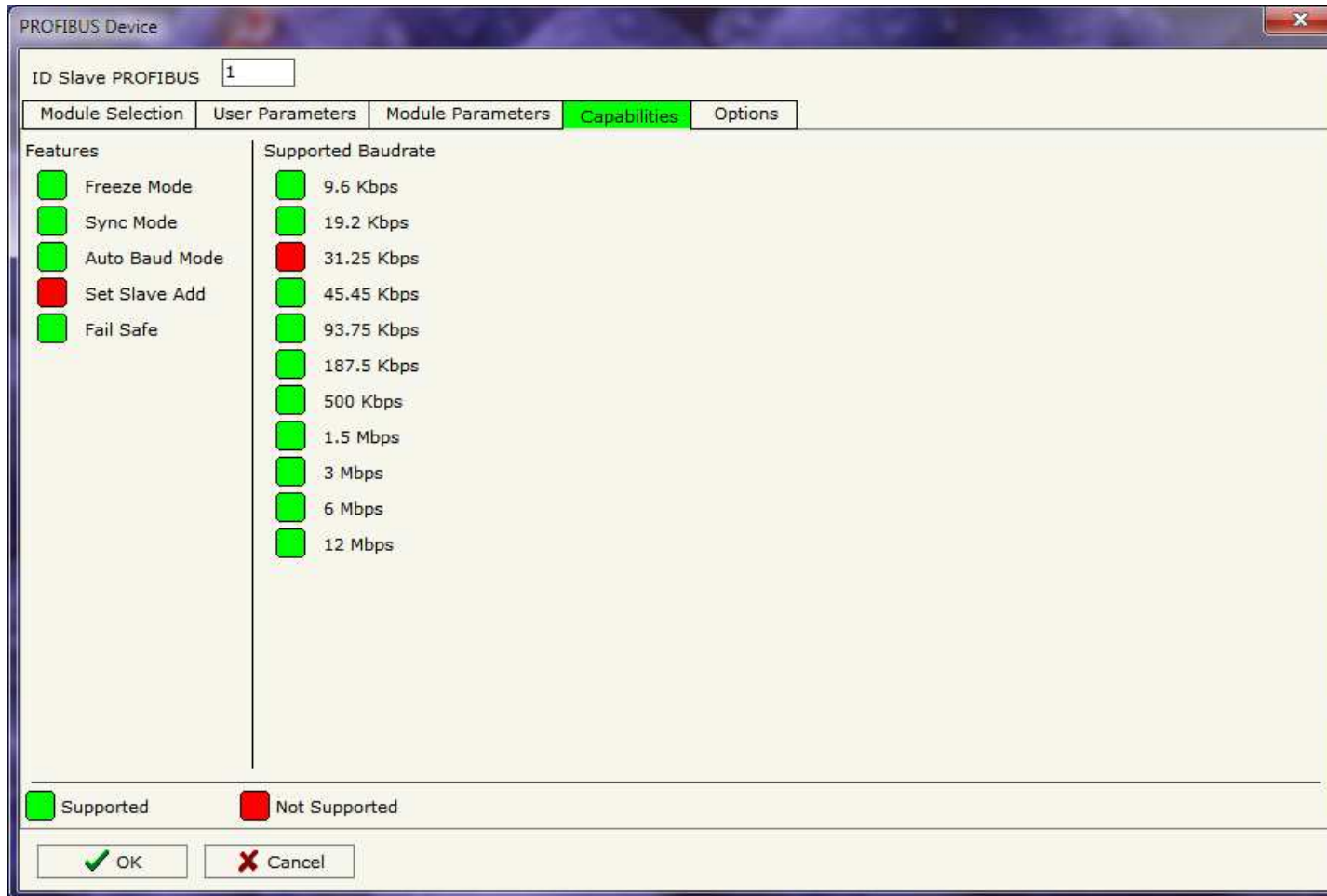


Figure 12: "PROFIBUS Device – Capabilities" window

OPTIONS:

The section "Options" is used to enable some option for each PROFIBUS device (Fig. 13).

The means of the fields are:

- In the field "**Enable Sync**" the PROFIBUS Sync command is enable. This option is enable only if the "Sync Mode" is supported by the device (see Capabilities section to check it);
- In the field "**Enable Freeze**" the PROFIBUS Freeze command is enable. This option is enable only if the "Freeze Mode" is supported by the device (see Capabilities section to check it);
- In the field "**Reset data if PROFIBUS master loses communication from the slave**" is possible to select to cancel the data of the slave if the Master lost the connection with the device;
- In the field "**Reset data if Ethernet doesn't write data with slave in ... milliseconds**" is possible to select to cancel the data sented to the slave PROFIBUS if the Converter don't receive a Ethernet frame within the time expressed in the field.

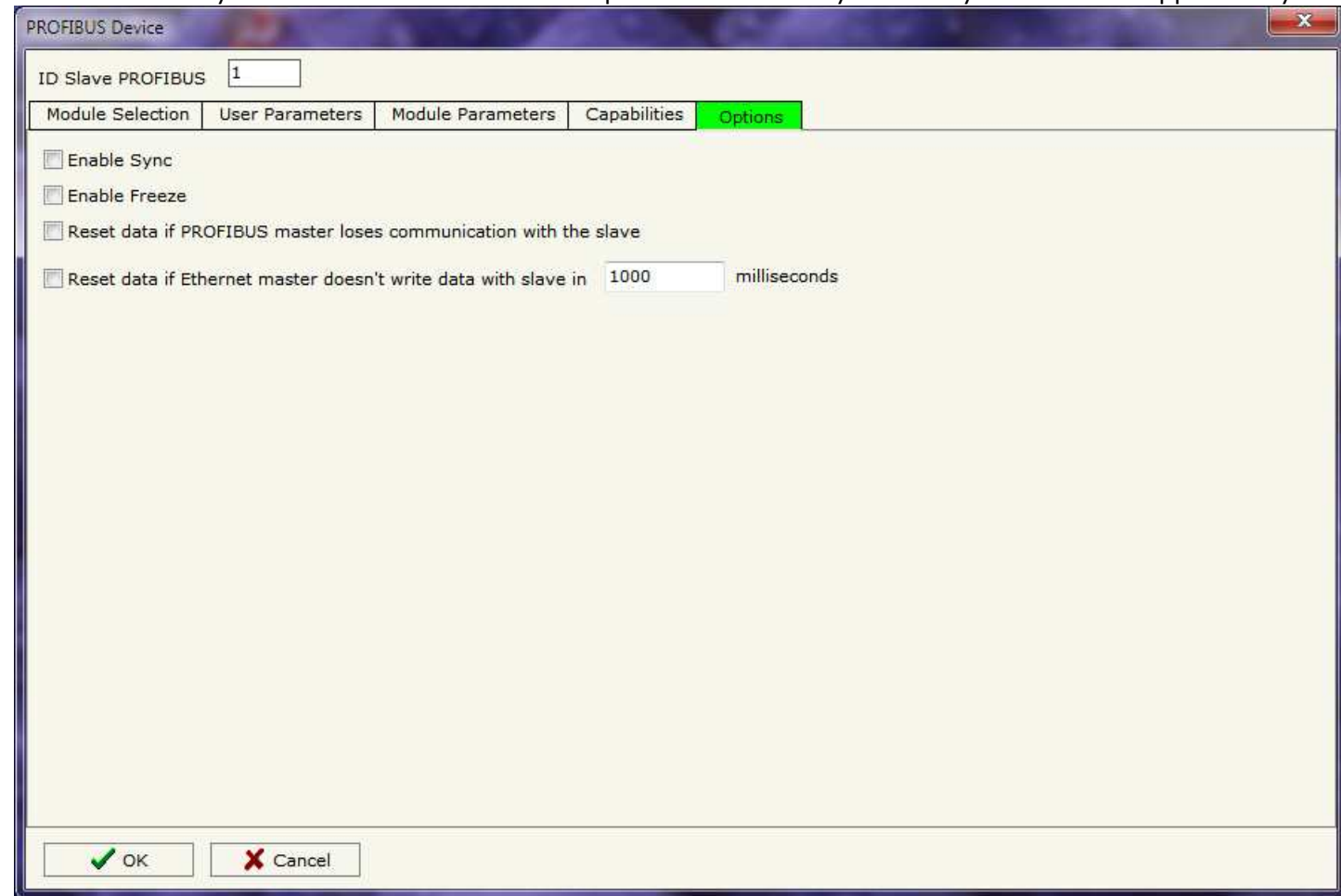


Figure 13: "PROFIBUS Device - Options" window

UPDATE DEVICE:

By pressing the **“Update Device”** button it is possible to load the created Configuration into the device; and also the Firmware, if is necessary.

If you don't know the actual IP address of the device you have to use this procedure:

- Turn off the Device;
- Put Dip2 of 'Dip-Switch A' at ON position;
- Insert the IP **“192.168.2.205”**;
- Turn on the device;
- Press the **“Ping”** button, must appear **“Device Found!”**;
- Press the **“Next”** button;
- Select which operations you want to do;
- Press the **“Execute update firmware”** button to start the upload;
- When all the operations are **“OK”** turn off the Device;
- Put Dip2 of 'Dip-Switch A' at OFF position;
- Turn on the device.

At this point the configuration/firmware on the device is correctly updated.

If you know the actual IP address of the device you have to use this procedure:

- Turn on the Device with the Ethernet cable inserted;
- Insert the actual IP of the Gateway;
- Press the **“Ping”** button, must appear **“Device Found!”**;
- Press the **“Next”** button;
- Select which operations you want to do;
- Press the **“Execute update firmware”** button to start the upload;
- When all the operations are **“OK”** the device automatically goes at Normal Mode.

At this point the configuration/firmware on the device is correctly update.

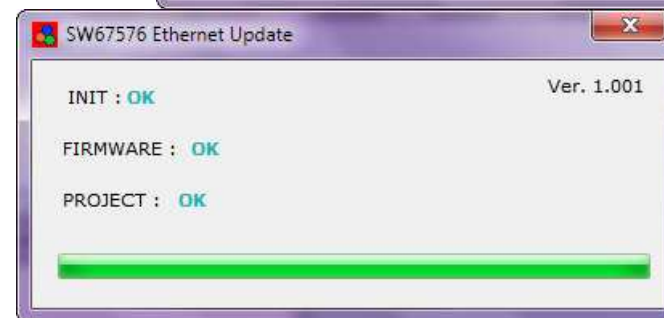
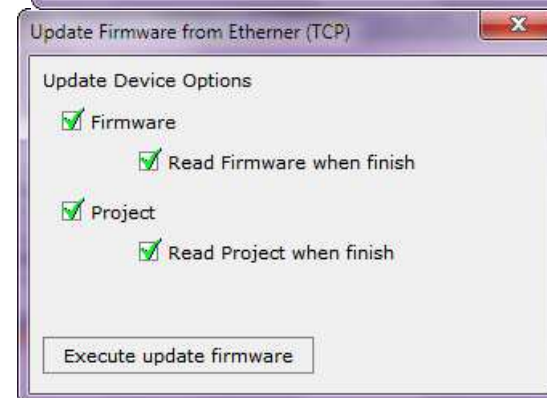
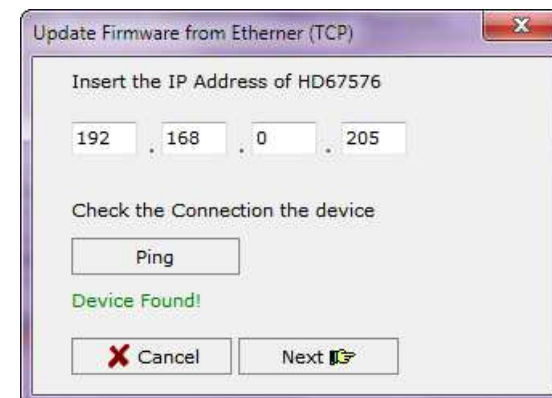


Figure 14: “Update Device” windows

**Note:**

When you install a new version of the software it is better if the first time you do the update of the Firmware in the HD67576-A1 device.

**Warning:**

If the Fig. 15 appears when you try to do the Update before require assistance try these points:

- Try to repeat the operations for the updating;
- Try with another PC;
- Try to restart the PC;
- If you are using the program inside a Virtual Machine, try to use in the main Operating System;
- If you are using Windows Seven or Vista, make sure that you have the administrator privileges;
- Take attention at Firewall lock;
- Check the LAN settings.



Figure 15: "Protection"



In the case of HD67576-A1 you have to use the software "SW67576": www.adfweb.com/download/filefold/SW67576.zip.

ETHERNET PROTOCOL:

The communication is made through UDP frames.
The frame that the HD67576 sends is composed like follow:

Byte Number	Description	Abbreviation	
1	Address PROFIBUS HD67576 + 0x80	/	
2	Address PROFIBUS Slave simulated	/	
3	Writing state (must be at 0)	/	
4	Slave informations	/	
5	Data length (OUT Slave)	DLR	
6 ÷ (DLR + 5)	Data OUT	/	
DLR + 6	Configuration length (programmed)	CLP	
(DLR + 7) ÷ (DLR + CLP + 6)	Configuration programmed	/	
DLR + CLP + 7	Data length (IN Slave)	DLW	
(DLR + CLP + 8) ÷ (DLR + CLP + DLW + 7)	Data IN	/	
DLR + CLP + DLW + 8	Fixed at 0	/	
DLR + CLP + DLW + 9	Fixed at 0	/	

If the "DLR" and/or "DLW" has got the value 0x00 there are no data to read/write.
The "Data OUT" are the same that the HD67576-A1 receives with the frame send by the companion.

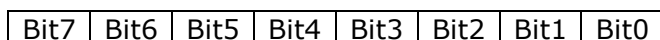
The frame that the HD67576 expects is composed like the follow:

Byte Number	Description	Abbreviation	
1	Address PROFIBUS + 0x80	/	
2	Address PROFIBUS Slave simulated	/	
3	Writing state (must be at 0)	/	
4	Slave informations	/	
5	Data length (OUT Slave)	DLR	
6 ÷ (DLR + 5)	Data OUT	/	
DLR + 6	Configuration length (programmed)	CLP	
(DLR + 7) ÷ (DLR + CLP + 6)	Configuration programmed	/	
DLR + CLP + 7	Data length (IN Slave)	DLW	
(DLR + CLP + 8) ÷ (DLR + CLP + DLW + 7)	Data IN	/	
DLR + CLP + DLW + 8	Configuration length (of device)	CLD	
(DLR + CLP + DLW + 9) ÷ (DLR + CLP + DLW + CLD + 8)	Configuration of device	/	
DLR + CLP + DLW + CLD + 9	Fixed at 0	/	

If the "DLR" and/or "DLW" has got the value 0x00 there are no data to read/write.
The "Data IN" are the same that the HD67576-A1 sends.

The "Slave informations" (Byte 4 of all frames) gives informations about the slave interrogated. Every bit has a meaning:

- Bit0: Configuration corresponds;
- Bit1: Parameters OK;
- Bit2: Configuration OK;
- Bit3: Data OK.



If all is correct, you have to read 0x0F.

Example of communication between HD67576-A1 connected to a HD67575-A1 through Ethernet and a slave PROFIBUS connected to the HD67575-A1. The Slave has got 7 OUT and 3 IN:

HD67576→HD67575: 8A 14 00 0F 07 00 00 00 00 00 00 00 08 42 06 00 01 82 02 00 02 03 00 00 00 00 00

Notes: first frame sent by the HD67576-A1. The IN and OUT are at 0.

HD67575→HD67576: 8B 14 00 0F 07 55 00 00 00 00 00 00 08 42 06 00 01 82 02 00 02 03 00 00 00 08 42 09 00 01 82 04 00 02 00

Notes: the HD67575-A1 sends a frame where the first OUT of slave is changed from 00h to 55h.

HD67576→HD67575: 8A 14 00 0F 07 55 00 00 00 00 00 00 08 42 06 00 01 82 02 00 02 03 03 00 00 00 00

Notes: the HD67576-A1 sends a frame where the first IN is changed from 00h to 03h.

HD67575→HD67576: 8B 14 00 0F 07 55 A5 00 00 00 00 00 08 42 06 00 01 82 02 00 02 03 03 00 00 08 42 09 00 01 82 04 00 02 00

Notes: the HD67575-A1 sends a frame where the second OUT of slave is changed from 00h to A5h.

HD67576→HD67575: 8A 14 00 0F 07 55 A5 00 00 00 00 00 08 42 06 00 01 82 02 00 02 03 03 5A 00 00 00

Notes: the HD67576-A1 sends a frame where the second IN is changed from 00h to 5Ah.

HD67575→HD67576: 8B 14 00 0F 07 55 A5 00 00 00 00 00 08 42 06 00 01 82 02 00 02 03 03 5A 00 08 42 09 00 01 82 04 00 02 00

Notes: nothing is changed in the Slave PROFIBUS connected to the HD67575-A1.

MECHANICAL DIMENSIONS:

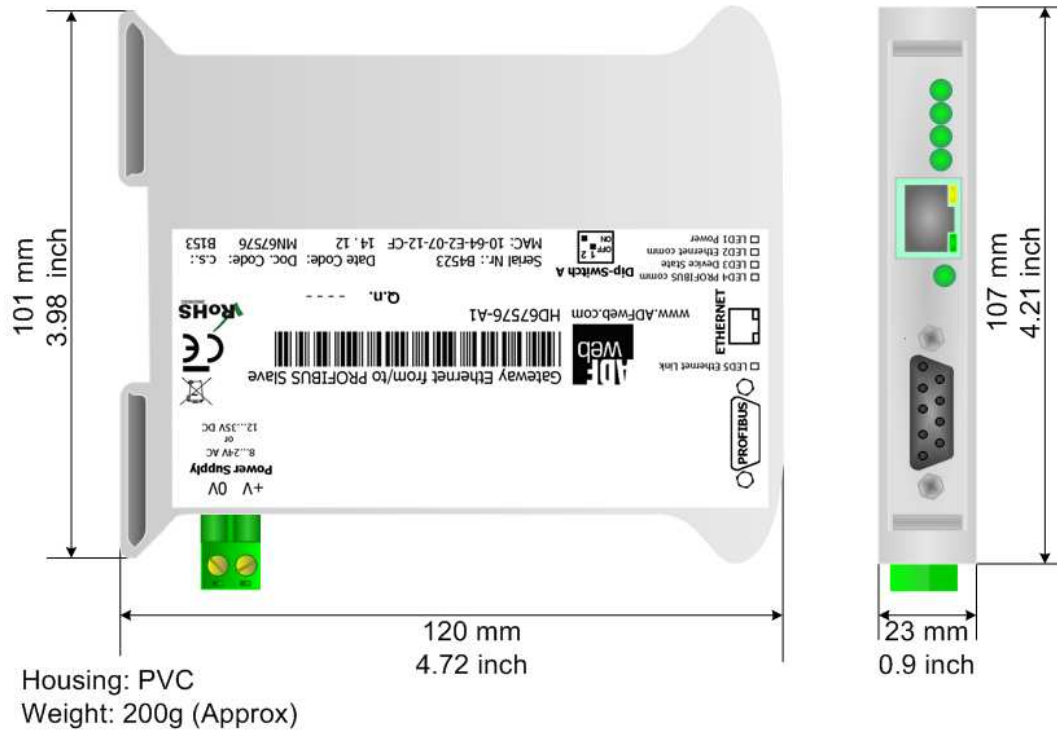


Figure 16: Mechanical dimensions scheme

ORDER CODE:

Order Code: **HD67576-A1** - PROFIBUS Slave / Ethernet - Converter

ACCESSORIES:

Order Code: **AC34001** - Rail DIN - Power Supply 220/240V AC 50/60Hz – 12 V AC

Order Code: **AC34002** - Rail DIN - Power Supply 110V AC 50/60Hz – 12 V AC

DISCLAIMER

All technical content within this document can be modified without notice. The content of the document content is a recurring audit. For losses due to fire, earthquake, third party access or other accidents, or intentional or accidental abuse, misuse, or use under abnormal conditions repairs are charged to the user. ADFweb.com S.r.l. will not be liable for accidental loss of use or inability to use this product, such as loss of business income. ADFweb.com S.r.l. shall not be liable for consequences of improper use.

OTHER REGULATIONS AND STANDARDS

WEEE INFORMATION



Disposal of old electrical and electronic equipment (as in the European Union and other European countries with separate collection systems).

— This symbol on the product or on its packaging indicates that this product may not be treated as household rubbish. Instead, it should be taken to an applicable collection point for the recycling of electrical and electronic equipment. If the product is disposed correctly, you will help prevent potential negative environmental factors and human health, which could otherwise be caused by inappropriate disposal. The recycling of materials will help to conserve natural resources. For more information about recycling this product, please contact your local city office, your household waste disposal service or the shop where you purchased the product.

RESTRICTION OF HAZARDOUS SUBSTANCES DIRECTIVE



The device respects the 2002/95/EC Directive on the restriction of the use of certain hazardous substances in electrical and electronic equipment (commonly referred to as Restriction of Hazardous Substances Directive or RoHS).

CE MARKING



The product conforms with the essential requirements of the applicable EC directives.

WARRANTIES AND TECHNICAL SUPPORT:

For fast and easy technical support for your ADFweb.com SRL products, consult our internet support at www.adfweb.com.
 Otherwise contact us at the address support@adfweb.com

RETURN POLICY:

If while using your product you have any problem and you wish to exchange or repair it, please do the following:

- 1) Obtain a Product Return Number (PRN) from our internet support at www.adfweb.com. Together with the request, you need to provide detailed information about the problem.
- 2) Send the product to the address provided with the PRN, having prepaid the shipping costs (shipment costs billed to us will not be accepted).

If the product is within the warranty of twelve months, it will be repaired or exchanged and returned within three weeks. If the product is no longer under warranty, you will receive a repair estimate.

PRODUCTS AND RELATED DOCUMENTS:

Part	Description	URL
HD67181	CAN bus Repeater	www.adfweb.com?product=HD67181
HD67316	CAN bus Analyzer	www.adfweb.com?product=HD67316
HD67575	Ethernet Server from/to PROFIBUS Master	www.adfweb.com?product=HD67575