

# User Manual

Revision 1.002  
English

## PROFINET / EtherNet/IP Master - Converter

(Order Code: HD67661-A1)

for Website information:

<http://www.adfweb.com/?Product=HD67661>

for Price information:

<http://www.adfweb.com/?Price=HD67661-A1>

### Benefits and Main Features:

- ⊕ Triple electrical isolation
- ⊕ Two Ethernet ports
- ⊕ Temperature range: -40°C/+85°C (-40°F/+185°F)



User Manual

For others EtherNet/IP Master devices, see also the following links:

#### EtherNet/IP Master from/to ...

- [www.adfweb.com?Product=HD67158](http://www.adfweb.com?Product=HD67158)
- [www.adfweb.com?Product=HD67643](http://www.adfweb.com?Product=HD67643)
- [www.adfweb.com?Product=HD67645](http://www.adfweb.com?Product=HD67645)
- [www.adfweb.com?Product=HD67646](http://www.adfweb.com?Product=HD67646)
- [www.adfweb.com?Product=HD67647](http://www.adfweb.com?Product=HD67647)
- [www.adfweb.com?Product=HD67661](http://www.adfweb.com?Product=HD67661)
- [www.adfweb.com?Product=HD67665](http://www.adfweb.com?Product=HD67665)
- [www.adfweb.com?Product=HD67667](http://www.adfweb.com?Product=HD67667)
- [www.adfweb.com?Product=HD67668](http://www.adfweb.com?Product=HD67668)
- [www.adfweb.com?Product=HD67669](http://www.adfweb.com?Product=HD67669)
- [www.adfweb.com?Product=HD67689](http://www.adfweb.com?Product=HD67689)
- [www.adfweb.com?Product=HD67743](http://www.adfweb.com?Product=HD67743)
- [www.adfweb.com?Product=HD67806](http://www.adfweb.com?Product=HD67806)
- [www.adfweb.com?Product=HD67955](http://www.adfweb.com?Product=HD67955)
- [www.adfweb.com?Product=HD67973](http://www.adfweb.com?Product=HD67973)
- [www.adfweb.com?Product=HD67B38](http://www.adfweb.com?Product=HD67B38)
- [www.adfweb.com?Product=HD67D24](http://www.adfweb.com?Product=HD67D24)
- [www.adfweb.com?Product=HD67E26](http://www.adfweb.com?Product=HD67E26)
- [www.adfweb.com?Product=HD67F24](http://www.adfweb.com?Product=HD67F24)

- (SNMP Agent)
- (PROFIBUS Slave)
- (CAN)
- (CANopen)
- (DeviceNet Slave)
- (PROFINET)
- (Modbus TCP Slave)
- (Serial)
- (Ethernet)
- (Modbus Slave)
- (BACnet Slave)
- (IEC61850 Server)
- (KNX)
- (MQTT)
- (IO-Link Slave)
- (OPC UA Server)
- (LoRaWAN)
- (EtherCAT Slave)
- (LoRaWAN Gateway)

Do you have an your customer protocol?

See the following links:

[www.adfweb.com?Product=HD67003](http://www.adfweb.com?Product=HD67003)

Do you need to choose a device? do you want help?

Ask it to the following link:

[www.adfweb.com?Cmd=helpme](http://www.adfweb.com?Cmd=helpme)

**INDEX:**

	Page
INDEX	2
UPDATED DOCUMENTATION	2
REVISION LIST	2
WARNING	2
TRADEMARKS	2
SECURITY ALERT	3
EXAMPLE OF CONNECTION	4
CONNECTION SCHEME	5
CHARACTERISTICS	6
CONFIGURATION	6
POWER SUPPLY	7
FUNCTION MODES	8
LEDS	9
ETHERNET	10
USE OF COMPOSITOR SW67661	11
NEW PROJECT / OPEN PROJECT	12
SOFTWARE OPTIONS	13
SET COMMUNICATION	15
ETHERNET/IP ACCESS	16
PROFINET XML	17
UPDATE DEVICE	18
MECHANICAL DIMENSIONS	20
ORDERING INFORMATIONS	21
ACCESSORIES	21
PLC CONFIGURATION (for PROFINET)	22
DISCLAIMER	25
OTHER REGULATIONS AND STANDARDS	25
WARRANTIES AND TECHNICAL SUPPORT	26
RETURN POLICY	26

**UPDATED DOCUMENTATION:**

Dear customer, we thank you for your attention and we remind you that you need to check that the following document is:

- Updated
- Related to the product you own

To obtain the most recently updated document, note the “document code” that appears at the top right-hand corner of each page of this document.

With this “Document Code” go to web page [www.adfweb.com/download/](http://www.adfweb.com/download/) and search for the corresponding code on the page. Click on the proper “Document Code” and download the updates.

**REVISION LIST:**

Revision	Date	Author	Chapter	Description
1.000	13/03/2018	Ff	All	First release version
1.001	10/12/2018	Ff	All	Revision
1.002	28/12/2023	Ln	All	Revision

**WARNING:**

ADFweb.com reserves the right to change information in this manual about our product without warning.

ADFweb.com is not responsible for any error this manual may contain.

**TRADEMARKS:**

All trademarks mentioned in this document belong to their respective owners.

**SECURITY ALERT:****GENERAL INFORMATION**

To ensure safe operation, the device must be operated according to the instructions in the manual. When using the device, legal and safety regulation are required for each individual application. The same applies also when using accessories.

**INTENDED USE**

Machines and systems must be designed so the faulty conditions do not lead to a dangerous situation for the operator (i.e. independent limit switches, mechanical interlocks, etc.).

**QUALIFIED PERSONNEL**

The device can be used only by qualified personnel, strictly in accordance with the specifications.

Qualified personnel are persons who are familiar with the installation, assembly, commissioning and operation of this equipment and who have appropriate qualifications for their job.

**RESIDUAL RISKS**

The device is state-of-the-art and is safe. The instruments can represent a potential hazard if they are inappropriately installed and operated by untrained personnel. These instructions refer to residual risks with the following symbol:

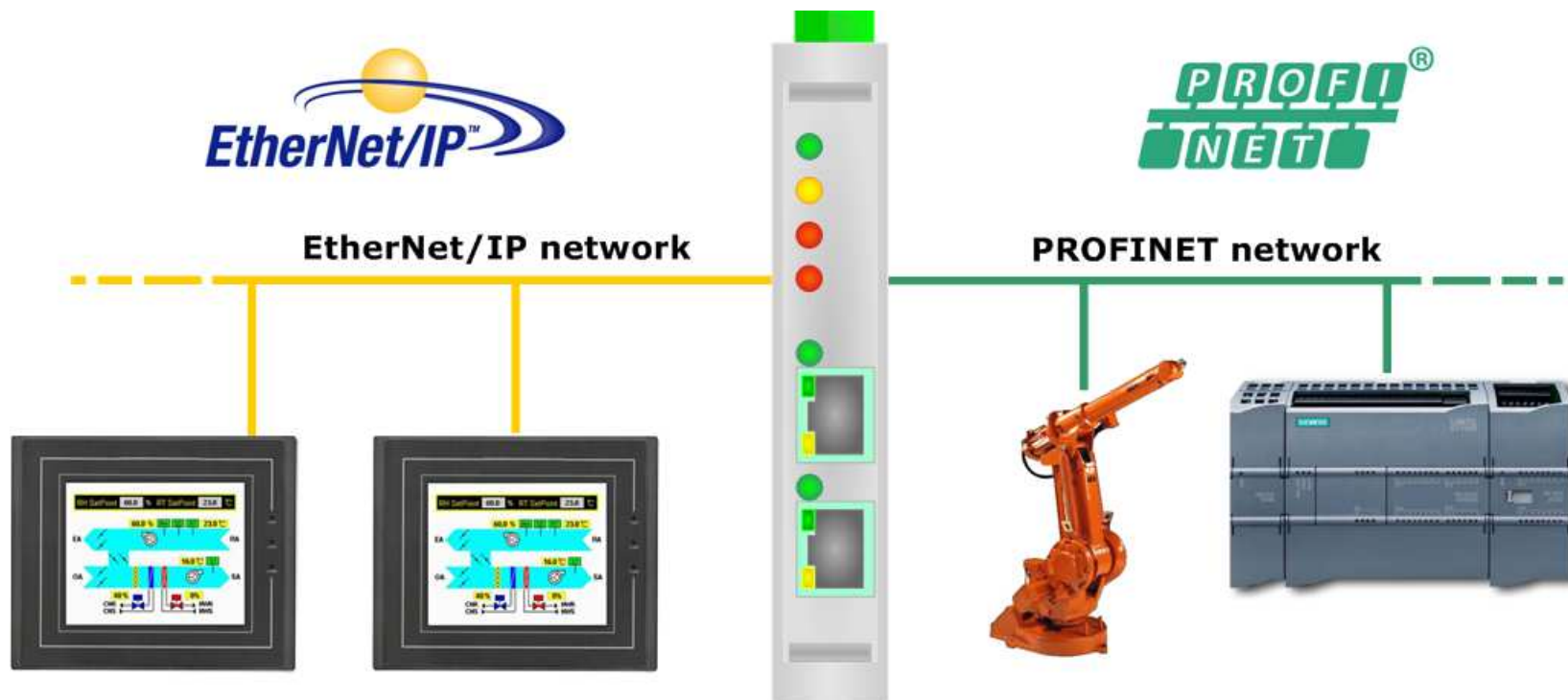


This symbol indicates that non-observance of the safety instructions is a danger for people that could lead to serious injury or death and / or the possibility of damage.

**CE CONFORMITY**

The declaration is made by our company. You can send an email to [support@adfweb.com](mailto:support@adfweb.com) or give us a call if you need it.

**EXAMPLE OF CONNECTION:**



**HD67661-A1**



**ADFweb.com**  
 tel. +39 - 0438.30.91.31  
[www.adfweb.com](http://www.adfweb.com)  
[info@adfweb.com](mailto:info@adfweb.com)

**CONNECTION SCHEME:**

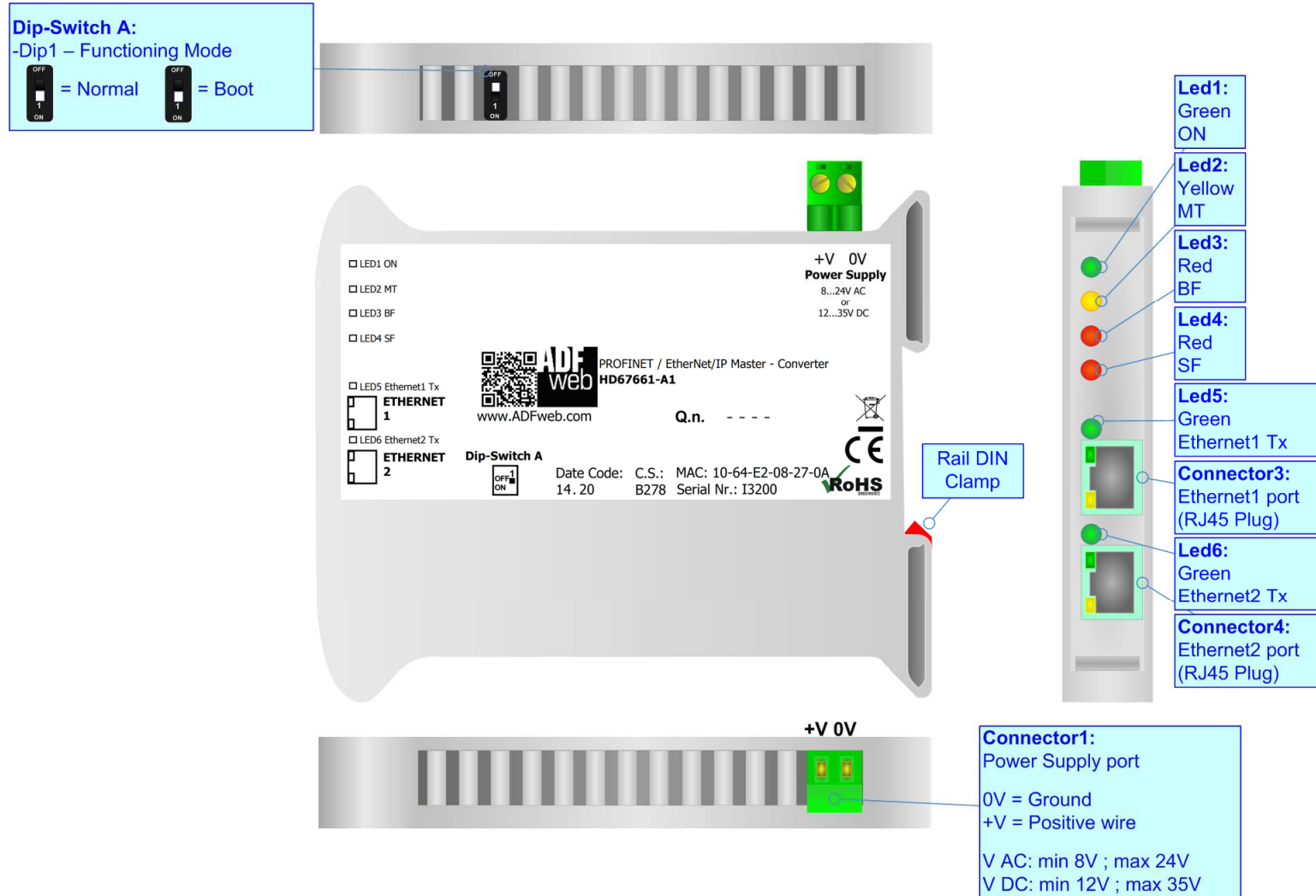


Figure 1: Connection scheme for HD67661-A1

**CHARACTERISTICS:**

The HD67661-A1 is a PROFINET / EtherNet/IP Master Converter.

It allows the following characteristics:

- Up to 1440 bytes in reading and 1440 bytes in writing;
- Two-directional information between EtherNet/IP and PROFINET;
- Mountable on 35mm Rail DIN;
- Wide power supply input range: 8...24V AC or 12...35V DC;
- Wide temperature range: -40°C / 85°C [-40°F / +185°F].

**CONFIGURATION:**

You need Compositor SW67661 software on your PC in order to perform the following:

- Define the parameter of the PROFINET;
- Define the parameter of the EtherNet/IP;
- Define the list of EtherNet/IP slaves connected to the converter;
- Update the device.

**POWER SUPPLY:**

The devices can be powered between a wide range of tensions. For more details see the two tables below.

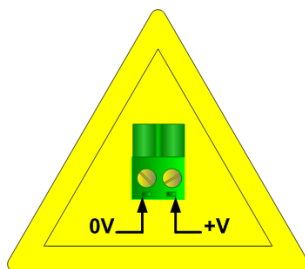
	VAC		VDC	
	Vmin	Vmax	Vmin	Vmax
<b>HD67661-A1</b>	<b>8V</b>	<b>24V</b>	<b>12V</b>	<b>35V</b>

Consumption at 24V DC:

Device	W/VA
HD67661-A1	4

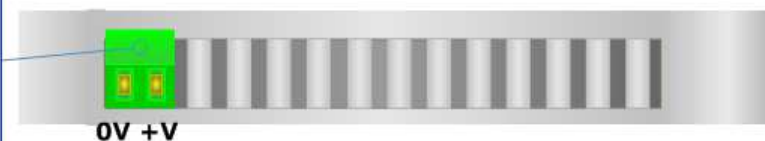


**Caution: Not reverse the polarity power**



HD67661-A1

**Connector1:**  
 Power Supply port  
 0V = Ground  
 +V = Positive wire  
 V AC: min 8V ; max 24V  
 V DC: min 12V ; max 35V



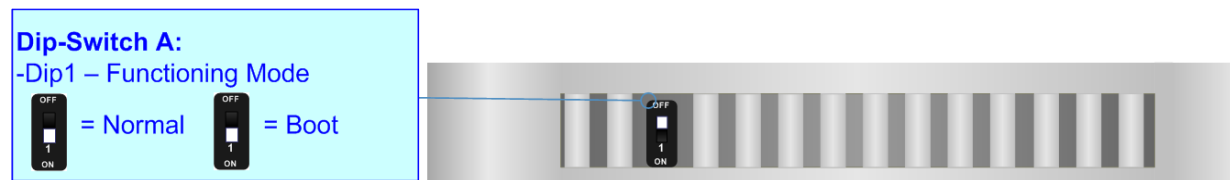
**FUNCTION MODES:**

The device has got two functions mode depending of the position of the Dip1 of 'Dip-Switch A':

- The first, with Dip1 in Off position (factory setting), is used for the normal working of the device.
- The second, with Dip1 in On position, is used for upload the Project/Firmware.

For the operations to follow for the updating (see 'UPDATE DEVICE' section).

According to the functioning mode, the LEDs will have specifics functions (see 'LEDS' section).

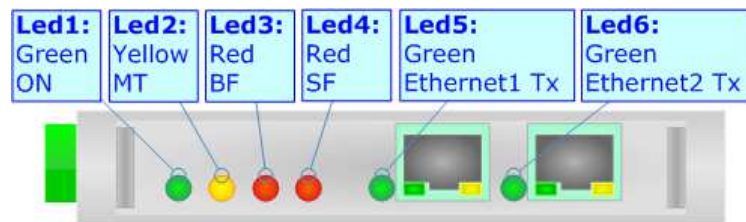




**LEDS:**

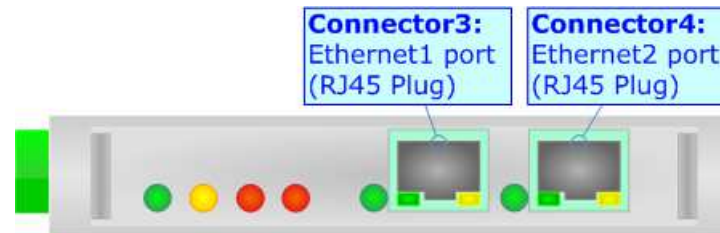
The device has got six LEDs that are used to give information of the functioning status. The various meanings of the LEDs are described in the table below.

LED	Normal Mode	Boot Mode
1: ON [supply voltage ] (green)	<b>ON:</b> Device powered <b>OFF:</b> Device not powered	<b>ON:</b> Device powered <b>OFF:</b> Device not powered
2: MT [maintenance display] (yellow)	<b>ON:</b> Device not able to communicate with at least one EtherNet/IP slave <b>OFF:</b> No maintenance are present	<b>Blinks quickly:</b> Boot state <b>Blinks very slowly (~0.5Hz):</b> update in progress
3: BF [bus fault] (red)	<b>ON:</b> The Ethernet connection is defective; the IP address exists several times in the network; the own NameOfStation exists several times in the network; no IP address has been set <b>Flashing:</b> At least one configured AR is no longer in the data exchange <b>OFF:</b> No errors are present	<b>Blinks quickly:</b> Boot state <b>Blinks very slowly (~0.5Hz):</b> update in progress
4: SF [group error] (red)	<b>ON:</b> At least one AR is not in the data exchange <b>OFF:</b> No errors are present	<b>Blinks quickly:</b> Boot state <b>Blinks very slowly (~0.5Hz):</b> update in progress
5: Ethernet1 Tx (green)	Blinks when is transmitting Ethernet frames	<b>Blinks quickly:</b> Boot state <b>Blinks very slowly (~0.5Hz):</b> update in progress
6: Ethernet2 Tx (green)	Blinks when is transmitting Ethernet frames	<b>Blinks quickly:</b> Boot state <b>Blinks very slowly (~0.5Hz):</b> update in progress



**ETHERNET:**


The Ethernet connection must be made using Connector3 or Connector4 of HD67661-A1 with at least a Category 5E cable. The maximum length of the cable should not exceed 100m. The cable has to conform to the T568 norms relative to connections in cat.5 up to 100 Mbps. To connect the device to an Hub/Switch is recommended the use of a straight cable, to connect the device to a PC/PLC/other is recommended the use of a cross cable.



**USE OF COMPOSITOR SW67661:**

To configure the Converter, use the available software that runs with Windows called SW67661. It is downloadable on the site [www.adfweb.com](http://www.adfweb.com) and its operation is described in this document. *(This manual is referenced to the last version of the software present on our web site)*. The software works with MSWindows (XP, Vista, Seven, 8, 10 or 11; 32/64bit).

When launching the SW67661, the window below appears (Fig. 2).

 **Note:**  
It is necessary to have installed .Net Framework 4.

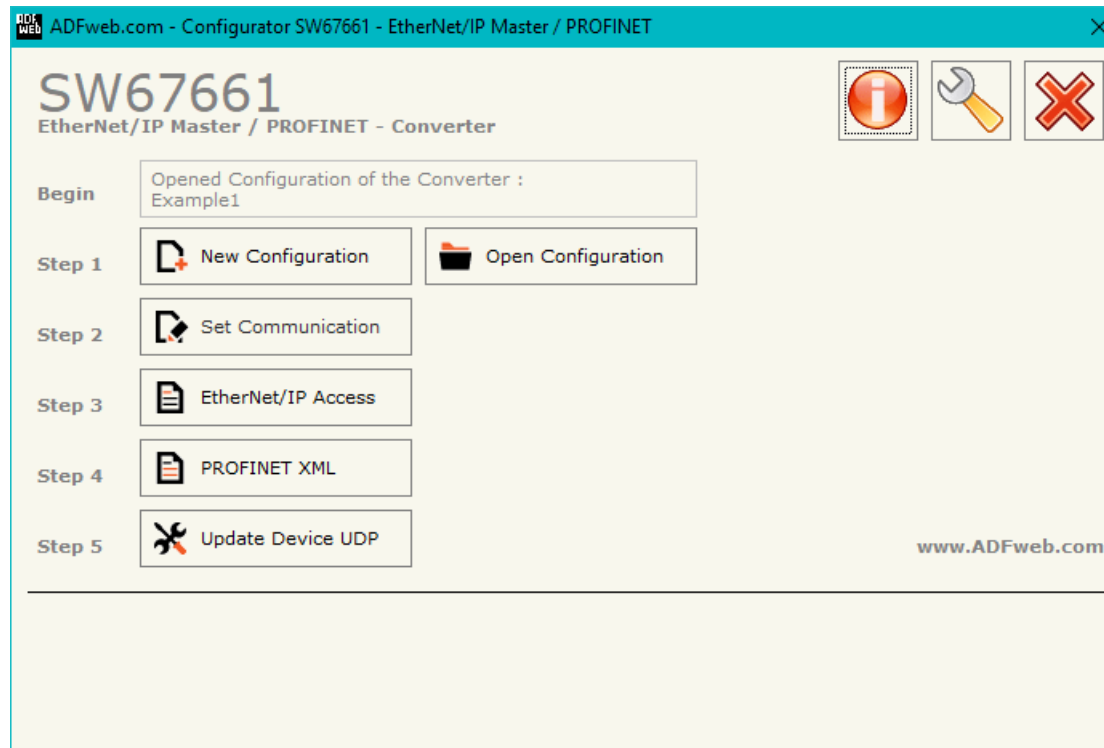
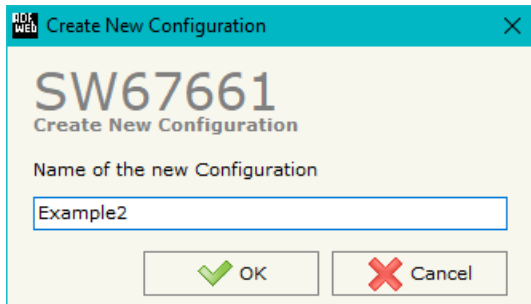


Figure 2: Main window for SW67661

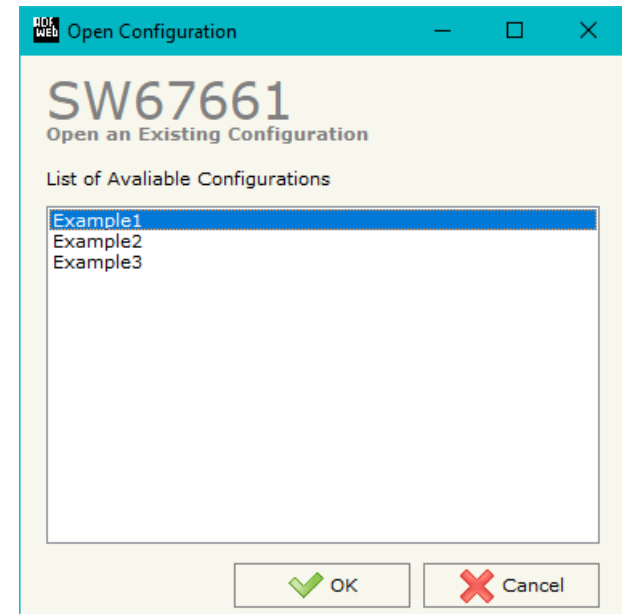
**NEW CONFIGURATION / OPEN CONFIGURATION:**

The “**New Configuration**” button creates the folder which contains the entire device’s configuration.




A device’s configuration can also be imported or exported:

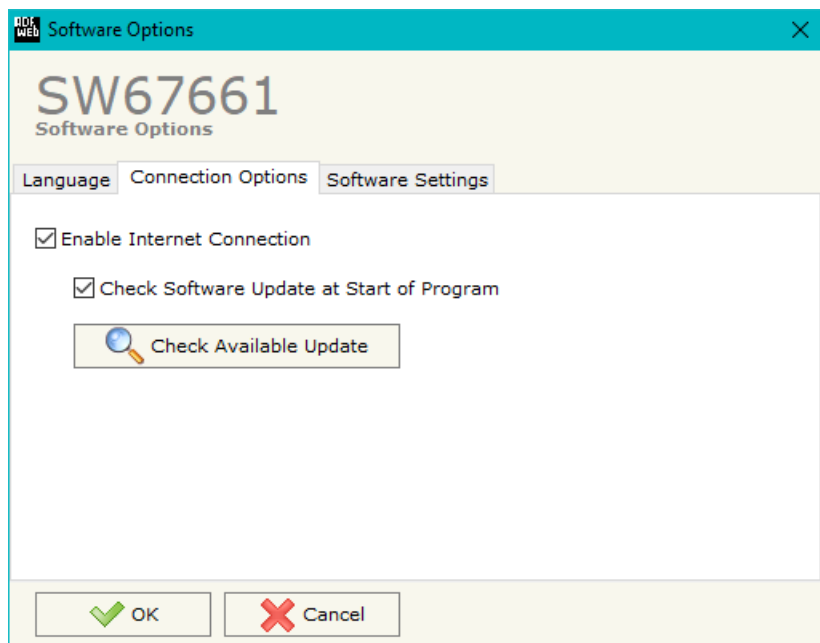
- To clone the configurations of a programmable “PROFINET / EtherNet/IP Master - Converter” in order to configure another device in the same manner, it is necessary to maintain the folder and all its contents;
- To clone a project in order to obtain a different version of the project, it is sufficient to duplicate the project folder with another name and open the new folder with the button “**Open Configuration**”.



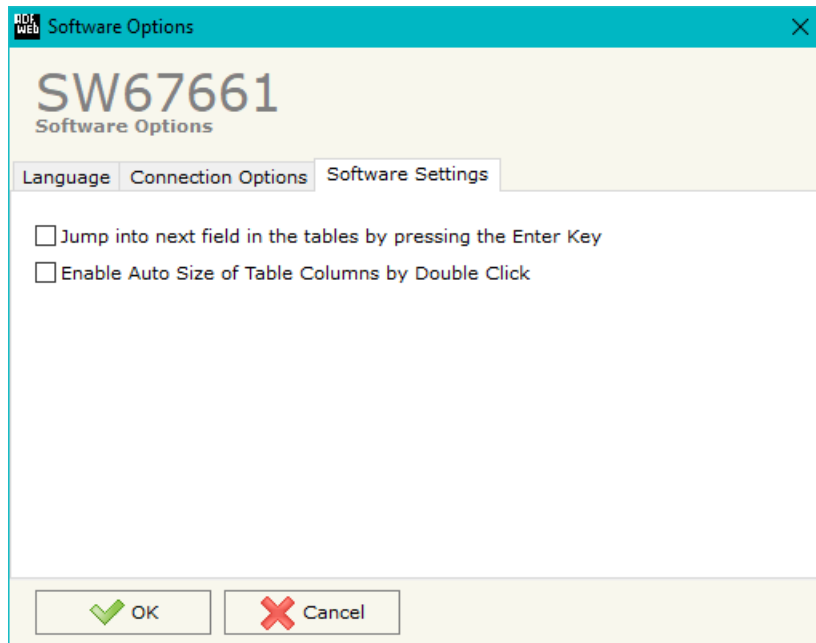
## SOFTWARE OPTIONS:

By pressing the “**Settings**” () button there is the possibility to change the language of the software and check the updatings for the compositor.

In the section “Language” it is possible to change the language of the software.



In the section “Connection Options”, it is possible to check if there are some updatings of the software compositor in ADFweb.com website. Checking the option “**Check Software Update at Start of Program**”, the SW67661 check automatically if there are updatings when it is launched.



In the section "Software Settings", it is possible to enable/disable some keyboard's commands for an easier navigation inside the tables contained in the different sections of the software.

## SET COMMUNICATION:

This section define the fundamental communication parameters of two buses, PROFINET and EtherNet/IP.

By Pressing the **"Set Communication"** button from the main window for SW67661 (Fig. 2) the window "Set Communication" appears (Fig. 3).

The means of the fields for "PROFINET" are:

- In the fields **"IP ADDRESS"** the IP address for PROFINET side of the converter is defined;
- In the fields **"SUBNET Mask"** the SubNet Mask for PROFINET side of the converter is defined;
- In the fields **"GATEWAY"** the default gateway of the net is defined. This feature can be enabled or disabled pressing the Check Box field. This feature is used for going out of the net;
- In the field **"Port"** the port used for PROFINET communication is defined. The port has a fixed value of 34964;
- In the field **"Name of Station"** the name of the PROFINET node is defined;
- If the field **"Create Single PROFINET Module in GSDML File"** is checked, the GSDML file will be generated with different modules (less then 1024 bytes per module);
- If the field **"Diagnostic"** is checked, an additional module inside the GSDML will be created. It will contain the status of the communication with each EtherNet/IP slave (1 working, 0 not working).

The means of the fields for "EtherNet/IP Master" are:

- In the fields **"IP ADDRESS"** the IP address for EtherNet/IP side of the converter is defined;
- In the fields **"SUBNET Mask"** the SubNet Mask for EtherNet/IP side of the converter is defined;
- In the fields **"GATEWAY"** the default gateway of the net is defined. This feature can be enabled or disabled pressing the Check Box field. This feature is used for going out of the net;
- In the field **"Port"** the port used for EtherNet/IP communication is defined. The port has a fixed value of 44818.

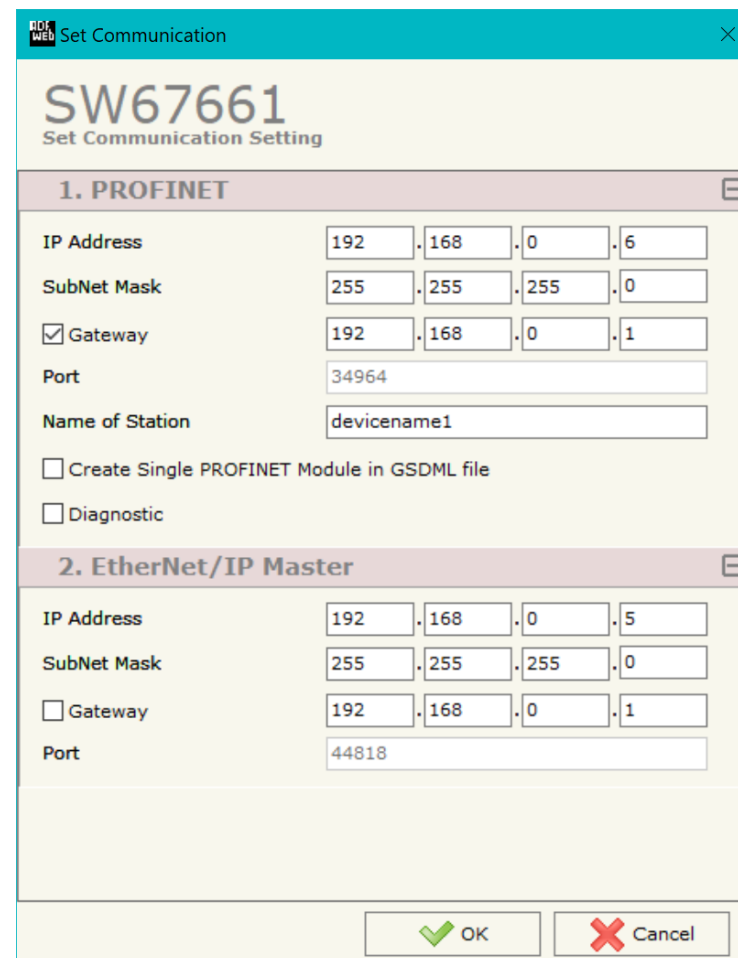


Figure 3: "Set Communication" window

## ETHERNET/IP ACCESS:

By Pressing the “**EtherNet/IP Access**” button from the main window for SW67661 (Fig. 2) the window “Set EtherNet/IP Slaves Access” appears (Fig. 4).

This section is used to define the list of the EtherNet/IP slaves to read/write with the PROFINET Master.

N	Enable	IP Address	Start Input	Num Input	Start Output	Num Output	Time Poll	Instance T > O	Conn. Point T > O	Instance O > T	Conn. Point O > T	Dim Header T > O	Dim Header O > T	Enable	Electronic Key	Enable	Data Segment	Reset Data	Mnemonic
1	<input checked="" type="checkbox"/>	192.168.0.12	0	10	5	15	1000	1	100	1	101	Default	Default	<input type="checkbox"/>		<input type="checkbox"/>		<input type="checkbox"/>	
2	<input checked="" type="checkbox"/>	192.168.0.13	1	5	0	0	2500	1	100	1	102	Default	Default	<input type="checkbox"/>		<input type="checkbox"/>		<input type="checkbox"/>	
3	<input checked="" type="checkbox"/>													<input type="checkbox"/>		<input type="checkbox"/>		<input type="checkbox"/>	
4	<input checked="" type="checkbox"/>													<input type="checkbox"/>		<input type="checkbox"/>		<input type="checkbox"/>	
5	<input checked="" type="checkbox"/>													<input type="checkbox"/>		<input type="checkbox"/>		<input type="checkbox"/>	

Figure 4: “Set EtherNet/IP Slaves Access” window

The means of the fields are:

- If the field “**Enable**” is checked, the polling to the EtherNet/IP slave is enabled;
- In the field “**IP Address**” the IP Address of the EtherNet/IP slave is defined;
- In the field “**Start Input**” the starting Input byte of the EtherNet/IP slave to map on PROFINET side is defined;
- In the field “**Num Input**” the number of consecutive Input byte to map on PROFINET side is defined;
- In the field “**Start Output**” the starting Output byte of the EtherNet/IP slave to write from PROFINET side is defined;
- In the field “**Num Output**” the number of consecutive Output byte to write from PROFINET side is defined;
- In the field “**Time Poll**” the polling time in ms is defined;
- In the field “**Instance T > O**” the instance of the assembly for the Target to Originator data direction is defined;
- In the field “**Conn. Point T > O**” the connection point of the assembly for the Target to Originator data direction is defined;
- In the field “**Instance O > T**” the instance of the assembly for the Originator to Target data direction is defined;
- In the field “**Conn. Point O > T**” the connection point of the assembly for the Originator to Target data direction is defined;
- In the field “**Dim Header T > O**” the dimension of the header for the Target to Originator data direction is defined;
- In the field “**Dim Header O > T**” the dimension of the header for the Originator to Target data direction is defined;



- If the field "**Enable**" is checked, the converter will check the electronic key to verify the authenticity of the slave. The key is defined in the field "**Electronic Key**";
- If the field "**Enable**" is checked, the converter will send the parameterization of the slave at the start-up using the "**Data Segment**";
- If the field "**Reset Data**" is checked, the converter resets the data on LoRaWAN side in case of EtherNet/IP fault;
- In the field "**Mnemonic**" a brief description is defined.

### PROFINET XML:

By pressing the "**PROFINET XML**" button it is possible to save the GSDML file for the PROFINET side.

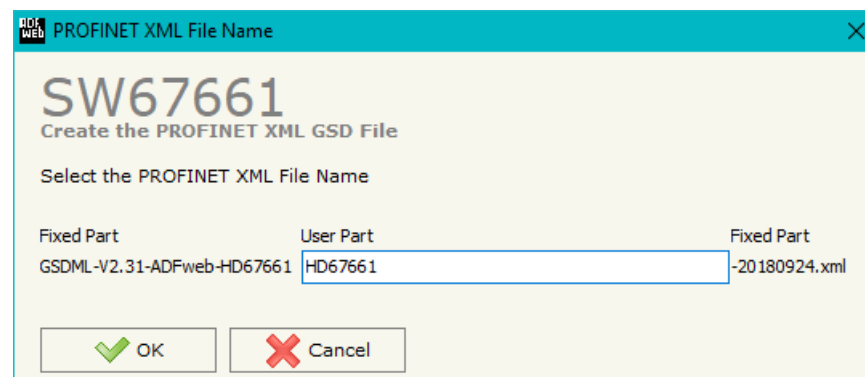


Figure 5: "PROFINET XML" window

### UPDATE DEVICE:

By pressing the **“Update Device”** button, it is possible to load the created Configuration into the device; and also the Firmware, if necessary. This by using the Ethernet port.

If you don't know the actual IP address of the device you have to use this procedure:

- Turn OFF the Device;
- Put Dip2 of 'Dip-Switch A' in ON position;
- Turn ON the device
- Connect the Ethernet cable;
- Insert the IP **“192.168.2.205”**;
- Select which operations you want to do;
- Press the **“Execute update firmware”** button to start the upload;
- When all the operations are “OK” turn OFF the Device;
- Put Dip2 of 'Dip-Switch A' in OFF position;
- Turn ON the device.

If you know the actual IP address of the device, you have to use this procedure:

- Turn ON the Device with the Ethernet cable inserted;
- Insert the actual IP of the Converter;
- Select which operations you want to do;
- Press the **“Execute update firmware”** button to start the upload;
- When all the operations are “OK” the device automatically goes at Normal Mode.

At this point the configuration/firmware on the device is correctly updated.

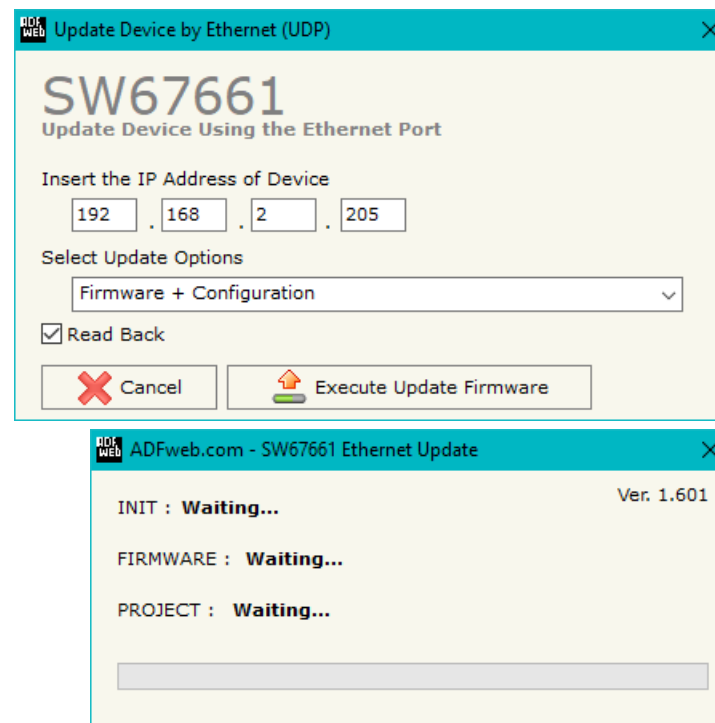


Figure 6: “Update device” windows



**Note:**

When you receive the device, for the first time, you also have to update the Firmware in the HD67661 device.



**Warning:**

If Fig. 7 appears when you try to do the Update try these points before seeking assistance:

- Check if the serial COM port selected is the correct one;
- Check if the serial cable is connected between the PC and the device;
- Try to repeat the operations for the updating;
- Try with another PC;
- Try to restart the PC;
- Check the LAN settings;
- If you are using the program inside a Virtual Machine, try to use in the main Operating System;
- If you are using Windows Seven, Vista, 8, 10 or 11 make sure that you have the administrator privileges;
- In case you have to program more than one device, using the "UDP Update", you have to cancel the ARP table every time you connect a new device on Ethernet. For do this you have to launch the "Command Prompt" and write the command "arp - d". Pay attention that with Windows Vista, Seven, 8, 10 or 11 you have to launch the "Command Prompt" with Administrator Rights;
- Pay attention at Firewall lock.

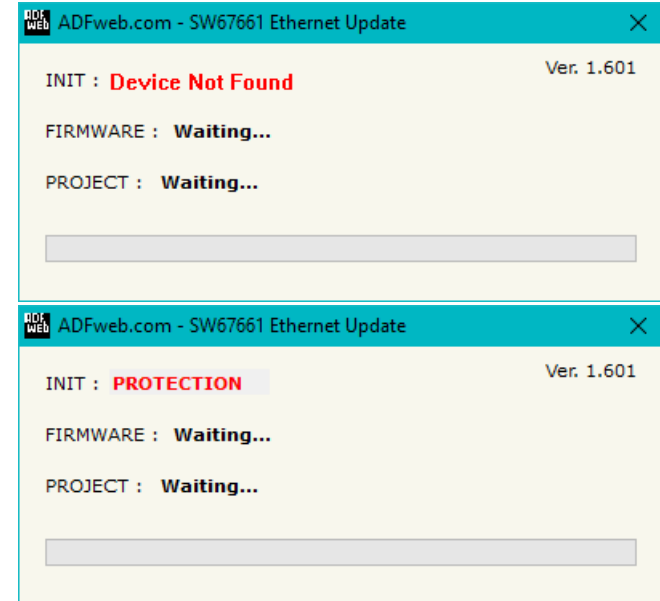


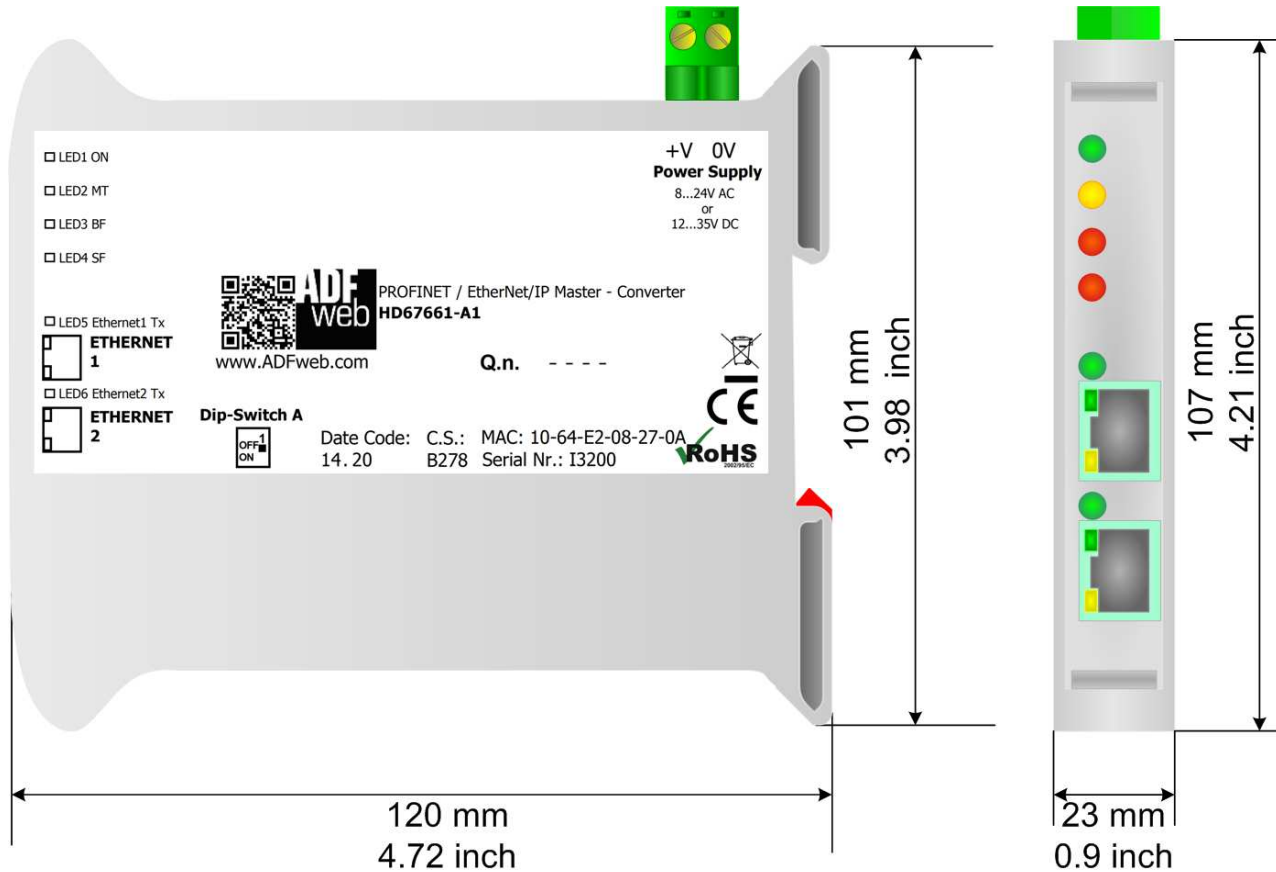
Figure 7: "Error" window



**Warning:**

In the case of HD67661 you have to use the software "SW67661": [www.adfweb.com/download/filefold/SW67661.zip](http://www.adfweb.com/download/filefold/SW67661.zip).

**MECHANICAL DIMENSIONS:**



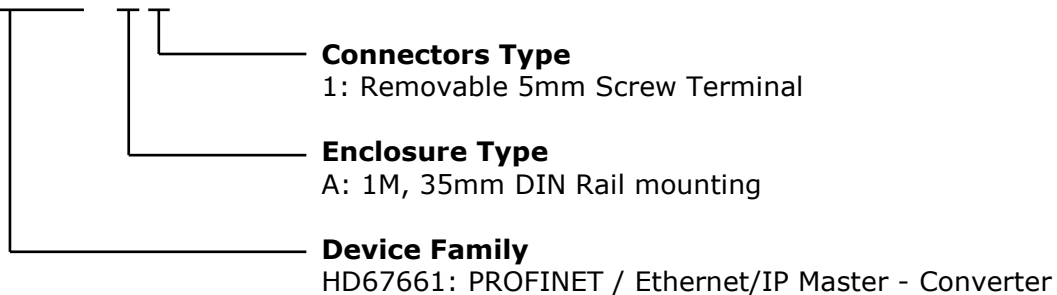
Housing: PVC  
 Weight: 200g (Approx)

Figure 8: Mechanical dimensions scheme for HD67661-A1

**ORDERING INFORMATIONS:**

The ordering part number is formed by a valid combination of the following:

**HD67661 - A 1**



Order Code: **HD67661-A1** - PROFINET / Ethernet/IP Master - Converter

**ACCESSORIES:**

Order Code: **AC34001** - Rail DIN - Power Supply 220/240V AC 50/60Hz – 12 V AC

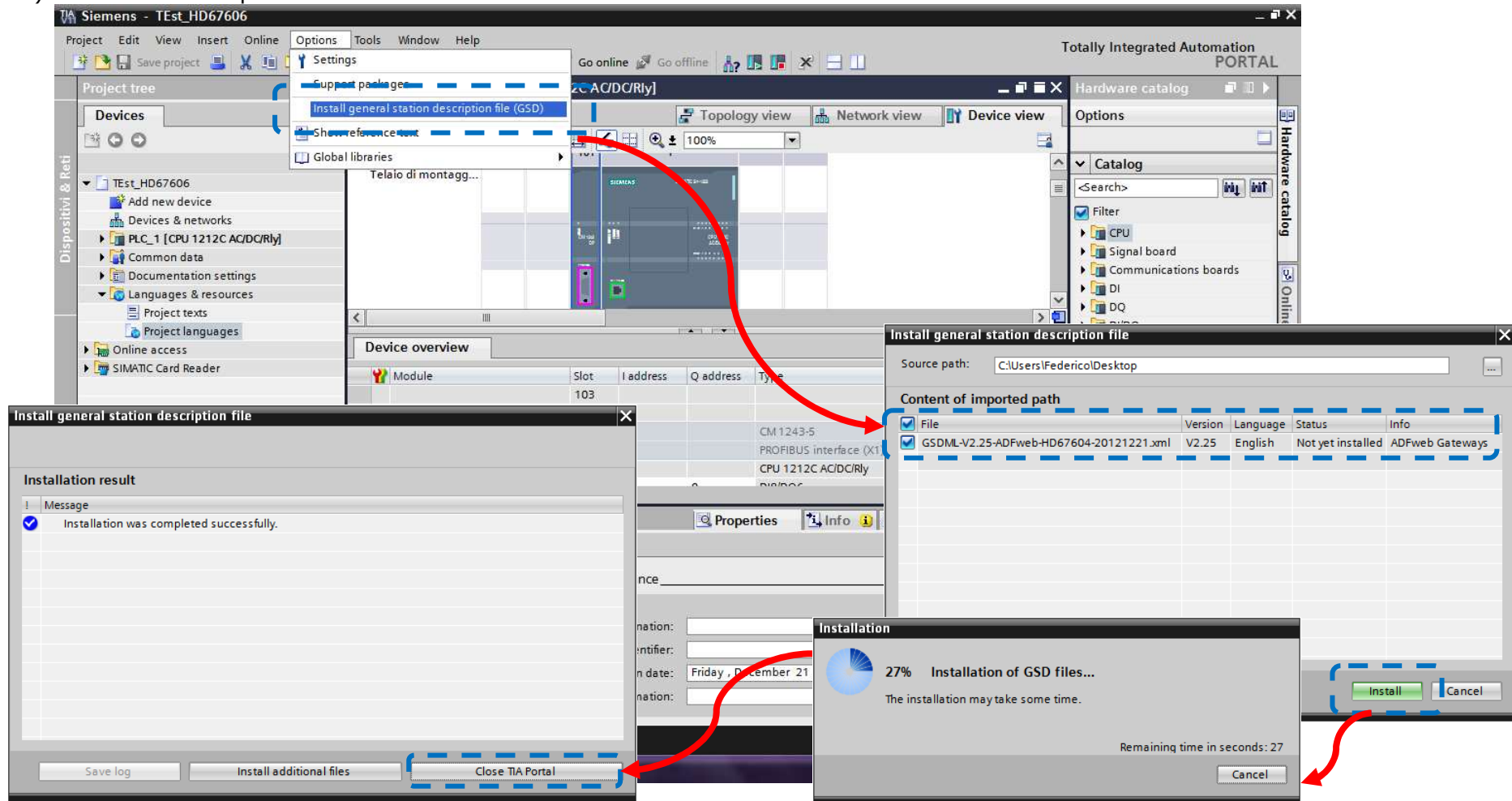
Order Code: **AC34002** - Rail DIN - Power Supply 110V AC 50/60Hz – 12 V AC

### PLC CONFIGURATION:

The configuration and commissioning of the PROFINET Converter as described on the following pages was accomplished with the help of the TIA Portal software by Siemens. In the case of using a control system from another supplier, refer to attend to the associated documentation.

These are the steps to follow:

- 1) Install the description file of the module.



2) Import the module in the network; connect the device to the PLC network and edit the parameters of IP, station name etc.

The screenshot displays the Siemens TIA Portal interface. The main window shows a network diagram with a SIMATIC 1200 station (PLC\_1) connected to a PROFINET IO system. Below the diagram is a 'Network overview' table:

Device	Type	Address in subnet	Subnet	Master system	Comment
SIMATIC 1200 station_1	SIMATIC 1200 station				
▶ PLC_1	CPU 1212C AC/DC/Rly				
GSD device_1	GSD device				
▶ SERIAL	CAN				

The bottom panel shows the 'Properties' dialog for the selected device (IE1), with the 'General' tab active. The 'Use IP protocol' checkbox is checked, and the 'Set IP address in the project' radio button is selected. The IP address is set to 192.168.2.189, and the subnet mask is 255.255.255.0.

3) Load the configuration into the PLC.

Configured access nodes of "PLC\_1"

Device	Device type	Type	Address	Subnet
PLC_1	CPU 1212C ACID...	PN/IE	192.168.2.50	PN/IE_1
CM 1243-5	CM 1243-5	PROFIBUS	2	

Type of the PG/PC interface:

PG/PC interface:

Connection to subnet:

1st gateway:

Accessible devices in target subnet:  Show all accessible devices

Device	Device type	Type	Address	Target device
PLC_1	CPU 1212C ACID...	PN/IE	192.168.2.50	PLC_1
—	—	PN/IE	Access address	—

Flash LED

Refresh

Online status information:  
 Connected to address 192.168.2.50  
 Scanning ended.

Load Cancel

Load preview

Check before loading

Status	!	Target	Message	Action
↓	✓	PLC_1	Ready for loading.	
	✓	▶ Stop modules	All modules will be stopped for downloading to device.	Stop all
	✓	▶ Device configurati...	Delete and replace system data in target	Download to device
	✓	▶ Software	Download software to device	Consistent download
	✓	▶ Additional inform...	There are differences between the settings for the project and the se	<input checked="" type="checkbox"/> Overwrite all

Refresh

Finish Load Cancel



**DISCLAIMER:**

All technical content within this document can be modified without notice. The content of the document is a under continual renewal. For losses due to fire, earthquake, third party access or other accidents, or intentional or accidental abuse, misuse, or use under abnormal conditions repairs are charged to the user. ADFweb.com S.r.l. will not be liable for accidental loss of use or inability to use this product, such as loss of business income. ADFweb.com S.r.l. shall not be liable for consequences of improper use.

**OTHER REGULATIONS AND STANDARDS:****WEEE INFORMATION**

Disposal of old electrical and electronic equipment (as in the European Union and other European countries with separate collection systems).

— This symbol on the product or on its packaging indicates that this product may not be treated as household rubbish. Instead, it should be taken to an applicable collection point for the recycling of electrical and electronic equipment. If the product is disposed correctly, you will help prevent potential negative environmental factors and impact of human health, which could otherwise be caused by inappropriate disposal. The recycling of materials will help to conserve natural resources. For more information about recycling this product, please contact your local city office, your household waste disposal service or the shop where you purchased the product.

**RESTRICTION OF HAZARDOUS SUBSTANCES DIRECTIVE**

The device respects the 2002/95/EC Directive on the restriction of the use of certain hazardous substances in electrical and electronic equipment (commonly referred to as Restriction of Hazardous Substances Directive or RoHS).

**CE MARKING**

The product conforms with the essential requirements of the applicable EC directives.

### **WARRANTIES AND TECHNICAL SUPPORT:**

For fast and easy technical support for your ADFweb.com SRL products, consult our internet support at [www.adfweb.com](http://www.adfweb.com).  
Otherwise contact us at the address [support@adfweb.com](mailto:support@adfweb.com)

### **RETURN POLICY:**

If while using your product you have any problem and you wish to exchange or repair it, please do the following:

- Obtain a Product Return Number (PRN) from our internet support at [www.adfweb.com](http://www.adfweb.com). Together with the request, you need to provide detailed information about the problem.
- Send the product to the address provided with the PRN, having prepaid the shipping costs (shipment costs billed to us will not be accepted).

If the product is within the warranty of twelve months, it will be repaired or exchanged and returned within three weeks. If the product is no longer under warranty, you will receive a repair estimate.



**ADFweb.com S.r.l.**  
Via Strada Nuova, 17  
IT-31010 Mareno di Piave  
TREVISO (Italy)  
Phone +39.0438.30.91.31  
Fax +39.0438.49.20.99  
[www.adfweb.com](http://www.adfweb.com)

