

User Manual

Revision 1.000

English

LoRaWAN / EtherNet/IP Slave - Converter

(Order Code: HD67D25-B2-868MHz)

For Website information:

www.adfweb.com?Product=HD67D25-B2

For Price information:

www.adfweb.com?Price=HD67D25-B2-868MHZ

Benefits and Main Features:

- ⊕ Very easy to configure
- ⊕ Power Supply 18...35V DC and 8...24 V AC
- ⊕ Temperature range: -40°C/+85°C (-40°F/+185°F)



For others LoRaWAN products, see also the following links:

Converter LoRaWAN to

www.adfweb.com?Product=HD67D01
www.adfweb.com?Product=HD67D02
www.adfweb.com?Product=HD67D03
www.adfweb.com?Product=HD67D04
www.adfweb.com?Product=HD67D05
www.adfweb.com?Product=HD67D15
www.adfweb.com?Product=HD67D16
www.adfweb.com?Product=HD67D17
www.adfweb.com?Product=HD67D18
www.adfweb.com?Product=HD67D19
www.adfweb.com?Product=HD67D20
www.adfweb.com?Product=HD67D21
www.adfweb.com?Product=HD67D22
www.adfweb.com?Product=HD67D23
www.adfweb.com?Product=HD67D24
www.adfweb.com?Product=HD67D26
www.adfweb.com?Product=HD67D27
www.adfweb.com?Product=HD67D28
www.adfweb.com?Product=HD67D29
www.adfweb.com?Product=HD67D30
www.adfweb.com?Product=HD67D31
www.adfweb.com?Product=HD67D32
www.adfweb.com?Product=HD67D33
www.adfweb.com?Product=HD67D34
www.adfweb.com?Product=HD67D35
www.adfweb.com?Product=HD67D36
www.adfweb.com?Product=HD67D37
www.adfweb.com?Product=HD67D38
www.adfweb.com?Product=HD67D39
www.adfweb.com?Product=HD67D40
www.adfweb.com?Product=HD67D41

(LoRaWAN)
(LoRaWAN)
(Modbus TCP Master)
(Modbus TCP Slave)
(Serial)
(M-Bus)
(BACnet Master)
(BACnet Slave)
(EtherNet)
(CAN)
(CANopen)
(DeviceNet Master)
(DeviceNet Slave)
(DMX)
(EtherNet/IP Master)
(J1939)
(KNX)
(NMEA 0183)
(NMEA 2000)
(PROFIBUS Master)
(PROFIBUS Slave)
(PROFINET Master)
(PROFINET Slave)
(IEC61850 Client)
(IEC61850 Server)
(MQTT)
(OPC UA Client)
(OPC UA Server)
(S7comm)
(SNMP Manager)
(SNMP Agent)



User Manual

INDEX:

	Page
INDEX	2
UPDATED DOCUMENTATION	2
REVISION LIST	2
WARNING	2
TRADEMARKS	2
SECURITY ALERT	3
EXAMPLE OF CONNECTION	4
CONNECTION SCHEME	5
CHARACTERISTICS	6
CONFIGURATION	6
POWER SUPPLY	7
FUNCTION MODES	8
LEDS	9
LORAWAN	10
ETHERNET	11
USE OF COMPOSITOR SW67D25	12
NEW CONFIGURATION / OPEN CONFIGURATION	13
SOFTWARE OPTIONS	14
SET COMMUNICATION	16
LORAWAN ACCESS	18
UPDATE DEVICE	20
LORAWAN PAYLOAD	22
PLC CONFIGURATION	23
MECHANICAL DIMENSIONS	27
ORDERING INFORMATIONS	28
ACCESSORIES	28
DISCLAIMER	29
OTHER REGULATIONS AND STANDARDS	29
WARRANTIES AND TECHNICAL SUPPORT	30
RETURN POLICY	30

UPDATED DOCUMENTATION:

Dear customer, we thank you for your attention and we remind you that you need to check that the following document is:

- ✚ Updated
- ✚ Related to the product you own

To obtain the most recently updated document, note the “document code” that appears at the top right-hand corner of each page of this document.

With this “Document Code” go to web page www.adfweb.com/download/ and search for the corresponding code on the page. Click on the proper “Document Code” and download the updates.

REVISION LIST:

Revision	Date	Author	Chapter	Description
1.000	04/12/2020	Ff	All	First release version

WARNING:

ADFweb.com reserves the right to change information in this manual about our product without warning.
ADFweb.com is not responsible for any error this manual may contain.

TRADEMARKS:

All trademarks mentioned in this document belong to their respective owners.

SECURITY ALERT:**GENERAL INFORMATION**

To ensure safe operation, the device must be operated according to the instructions in the manual. When using the device, legal and safety regulation are required for each individual application. The same applies also when using accessories.

INTENDED USE

Machines and systems must be designed so the faulty conditions do not lead to a dangerous situation for the operator (i.e. independent limit switches, mechanical interlocks, etc.).

QUALIFIED PERSONNEL

The device can be used only by qualified personnel, strictly in accordance with the specifications. Qualified personnel are persons who are familiar with the installation, assembly, commissioning and operation of this equipment and who have appropriate qualifications for their job.

RESIDUAL RISKS

The device is state-of-the-art and is safe. The instruments can represent a potential hazard if they are inappropriately installed and operated by untrained personnel. These instructions refer to residual risks with the following symbol:



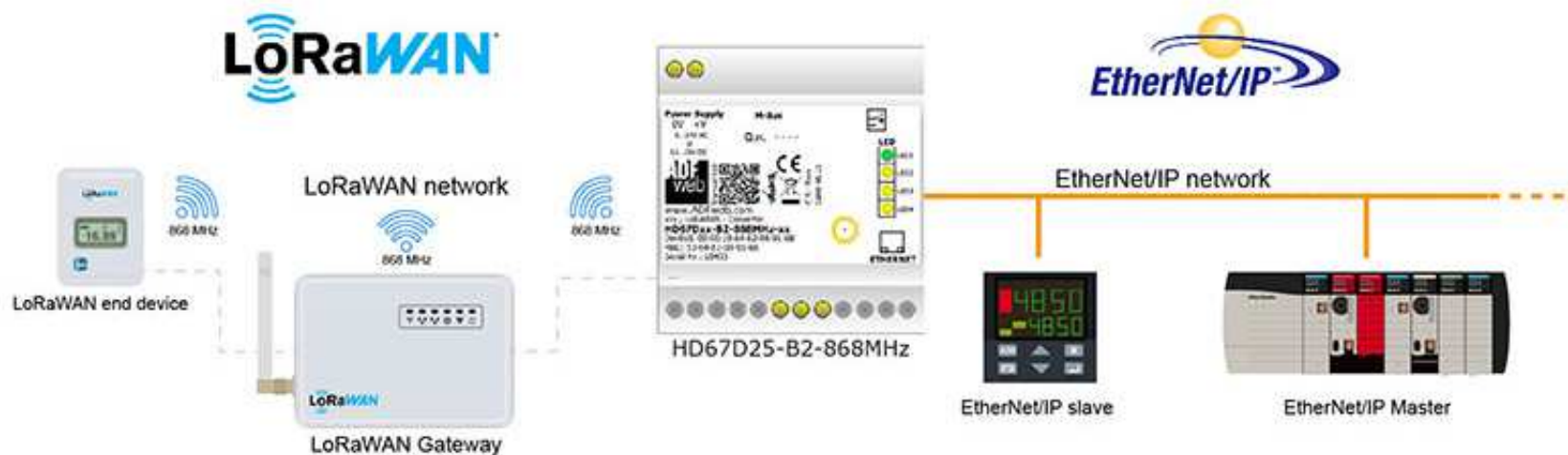
This symbol indicates that non-observance of the safety instructions is a danger for people that could lead to serious injury or death and / or the possibility of damage.

CE CONFORMITY

The declaration is made by our company. You can send an email to support@adfweb.com or give us a call if you need it.

EXAMPLE OF CONNECTION:

EtherNet/IP / LoRaWAN - Converter
HD67D25-B2



ADFweb.com



+39 0438 309 131



+39 349 440 9592



support@adfweb.com

CONNECTION SCHEME:

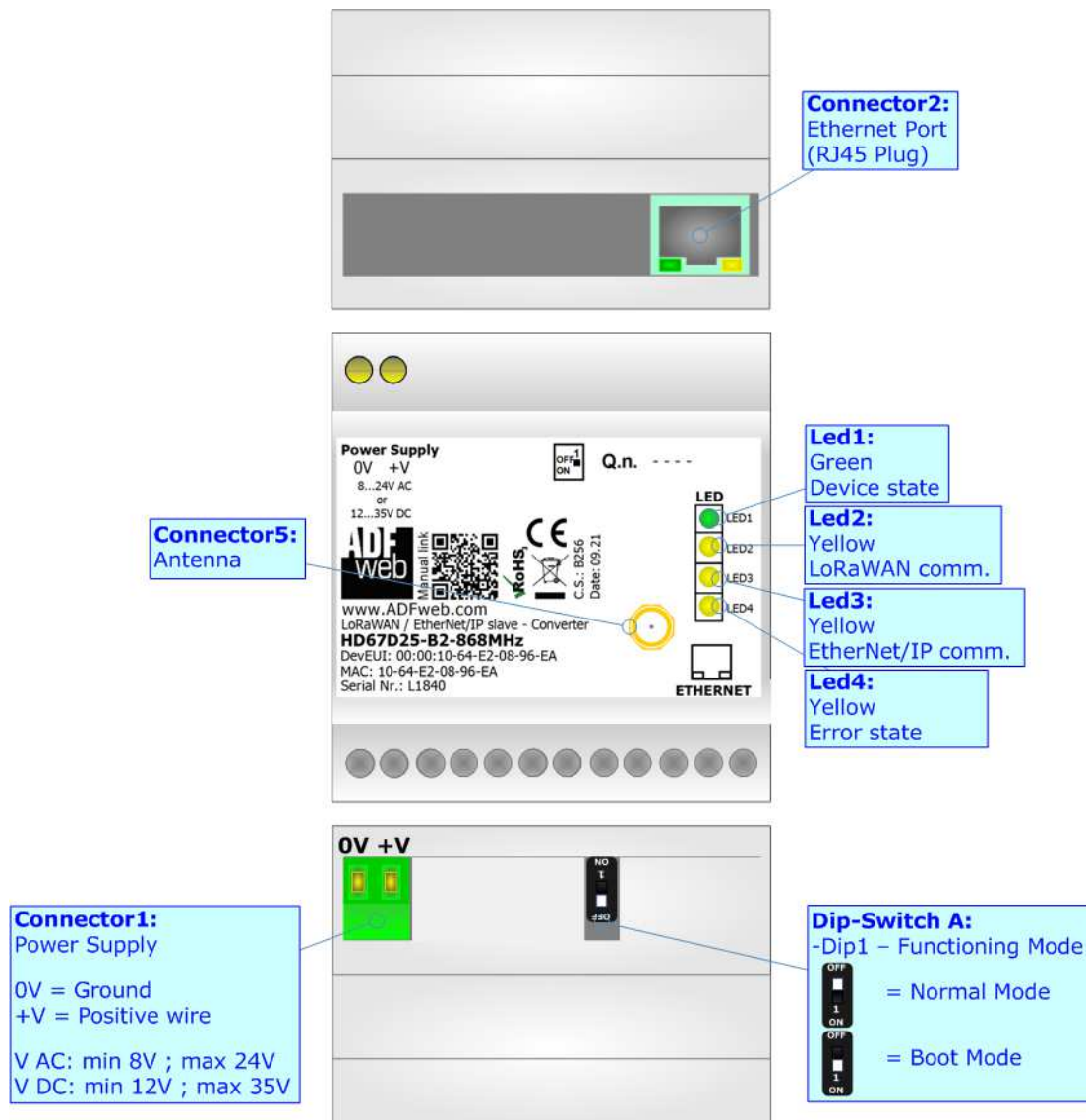


Figure 1: Connection scheme for HD67D25-B2-xxxMHz

CHARACTERISTICS:

The HD67D25-B2 is a LoRaWAN / EtherNet/IP Converter.

It allows the following characteristics:

- Electrical isolation between EtherNet/IP and Power Supply;
- Mountable on 35mm Rail DIN;
- Wide power supply input range: 12...35V DC and 8...24V AC;
- Wide temperature range: -40°C / 85°C [-40°F / +185°F].


CONFIGURATION:

You need Compositor SW67D25 software on your PC in order to perform the following:

- Define the parameter of LoRaWAN line;
- Define the parameter of EtherNet/IP line;
- Define the list of LoRaWAN messages in uplink and downlink to the LoRaWAN gateway;
- Update the device.

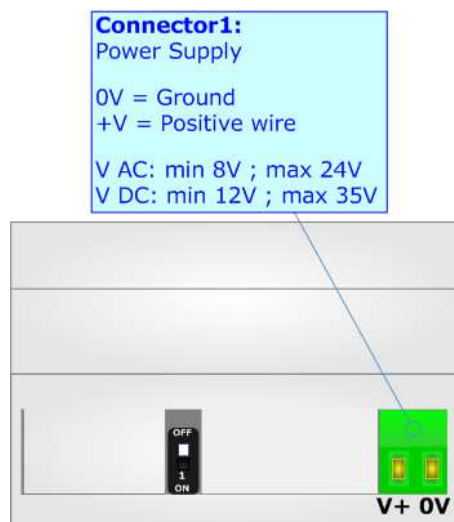
POWER SUPPLY:

The devices can be powered at 8...24V AC and 12...35V DC. For more details see the two tables below.

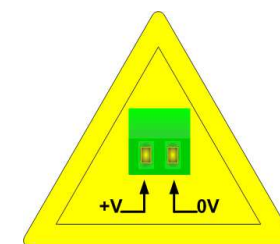
VAC 		VDC 	
Vmin	Vmax	Vmin	Vmax
8V	24V	12V	35V

Consumption at 24V DC:

Device	Consumption [W/VA]
HD67D25-B2-xxxMHz	3.5



Caution: Not reverse the polarity power



HD67D25-B2-xxxMHz

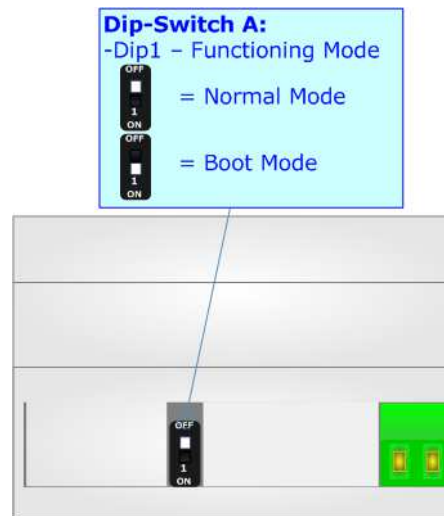
FUNCTION MODES:

The device has got two functions mode depending of the position of the 'Dip1 of Dip-Switch A':

- The first, with 'Dip1 of Dip-Switch A' at "OFF" position, is used for the normal working of the device.
- The second, with 'Dip1 of Dip-Switch A' at "ON" position, is used for upload the Project and/or Firmware.

For the operations to follow for the updating, see 'UPDATE DEVICE' section.

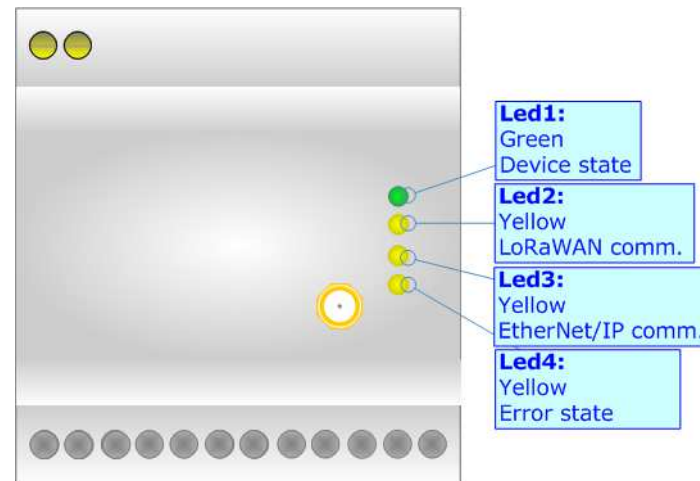
According to the functioning mode, the LEDs will have specifics functions, see 'LEDS' section.



LEDS:

The device has got four LEDs that are used to give information of the functioning status. The various meanings of the LEDs are described in the table below.

LED	Normal Mode	Boot Mode
1: Device State (green)	Blinks slowly (~1Hz)	Blinks quickly: Boot state Blinks very slowly (~0.5Hz): update in progress
2: LoRaWAN communication (yellow)	Blinks when LoRaWAN data is received	Blinks quickly: Boot state Blinks very slowly (~0.5Hz): update in progress
3: Ethernet/IP communication (yellow)	Blinks when a Ethernet/IP request is received	Blinks quickly: Boot state Blinks very slowly (~0.5Hz): update in progress
4: Error state (yellow)	ON: An error in the communication busses occurs OFF: No errors are present	Blinks quickly: Boot state Blinks very slowly (~0.5Hz): update in progress



LORAWAN:

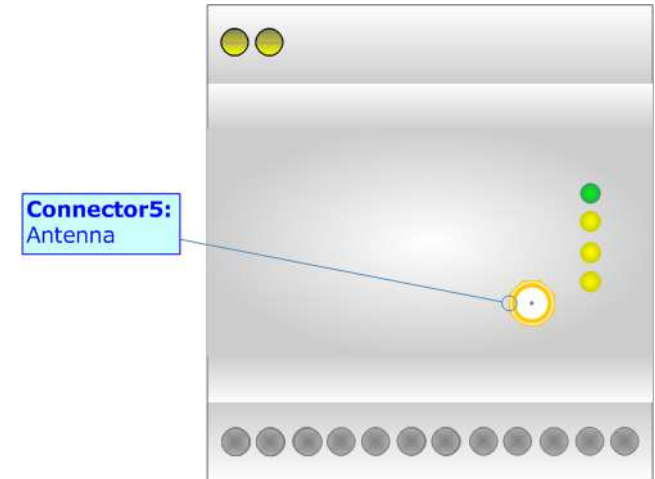
The LoRaWAN® specification is a Low Power, Wide Area (LPWA) networking protocol designed to wirelessly connect battery operated ‘things’ to the internet in regional, national or global networks, and targets key Internet of Things (IoT) requirements such as bi-directional communication, end-to-end security, mobility and localization services.

LoRaWAN® network architecture is deployed in a star-of-stars topology in which gateways relay messages between end-devices and a central network server.

The wireless communication takes advantage of the Long Range characteristics of the LoRa physical layer, allowing a single-hop link between the end-device and one or many gateways. All modes are capable of bi-directional communication, and there is support for multicast addressing groups to make efficient use of spectrum during tasks such as Firmware Over-The-Air (FOTA) upgrades or other mass distribution messages.

Converters from HD67D25 serie act as end-devices and they can communicate with one or more LoRaWAN Gateways.

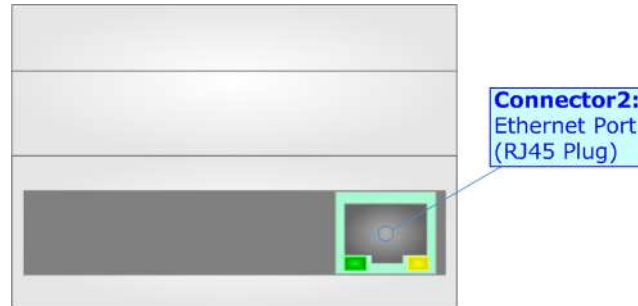
The converters support all the standard datarates and they work both on public and private networks.



ETHERNET:

The Ethernet port is used for programming the device and for EtherNet/IP communication.

The Ethernet connection must be made using Connector2 of HD67D25-B2 with at least a Category 5E cable. The maximum length of the cable should not exceed 100m. The cable has to conform to the T568 norms relative to connections in cat.5 up to 100 Mbps. To connect the device to an Hub/Switch is recommended the use of a straight cable, to connect the device to a PC is recommended the use of a cross cable.



USE OF COMPOSITOR SW67D25:

To configure the Converter, use the available software that runs with Windows called SW67D25. It is downloadable on the site www.adfweb.com and its operation is described in this document. The software works with MS Windows (XP, Vista, Seven, 8, 10; 32/64bit).

When launching the SW67D25, the window below appears (Fig. 2).

**Note:**

It is necessary to have installed .Net Framework 4.

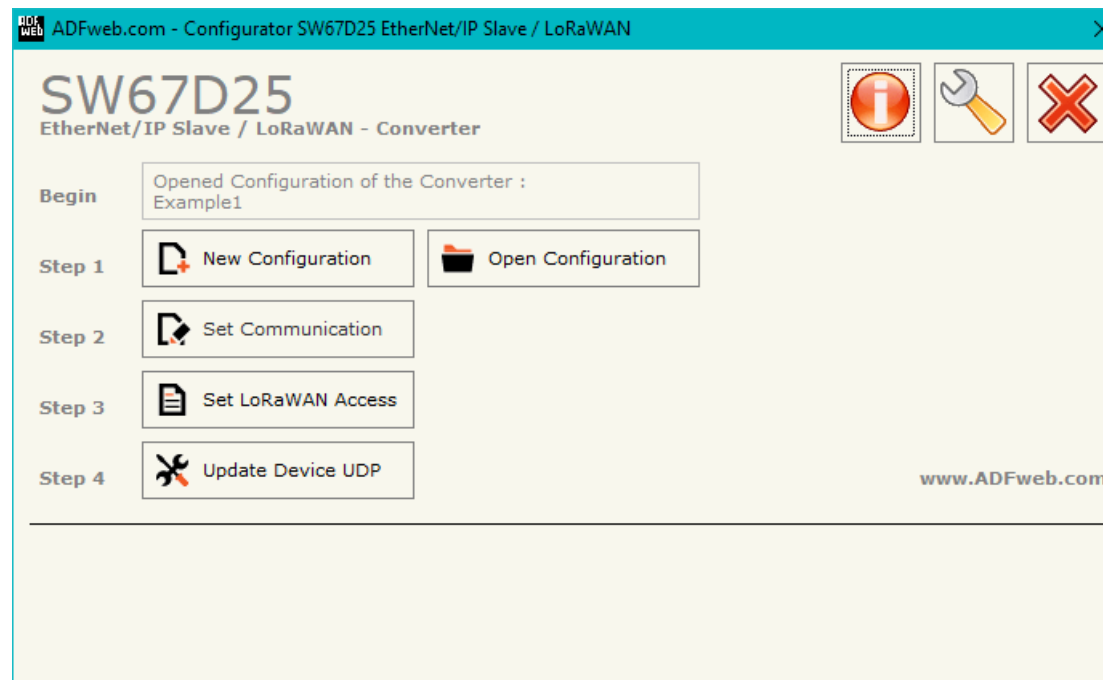
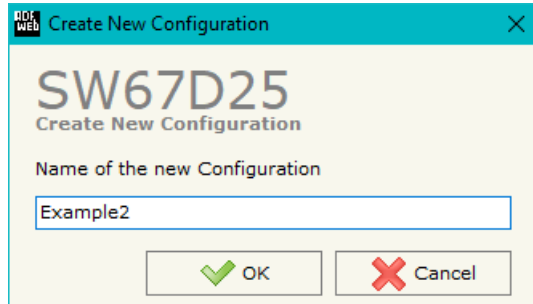


Figure 2: Main window for SW67D25

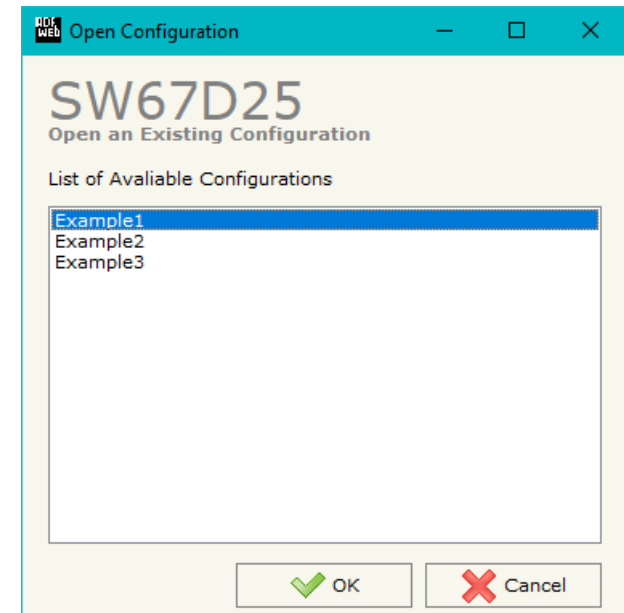
NEW CONFIGURATION / OPEN CONFIGURATION:

The “**New Configuration**” button creates the folder which contains the entire device’s configuration.




A device’s configuration can also be imported or exported:

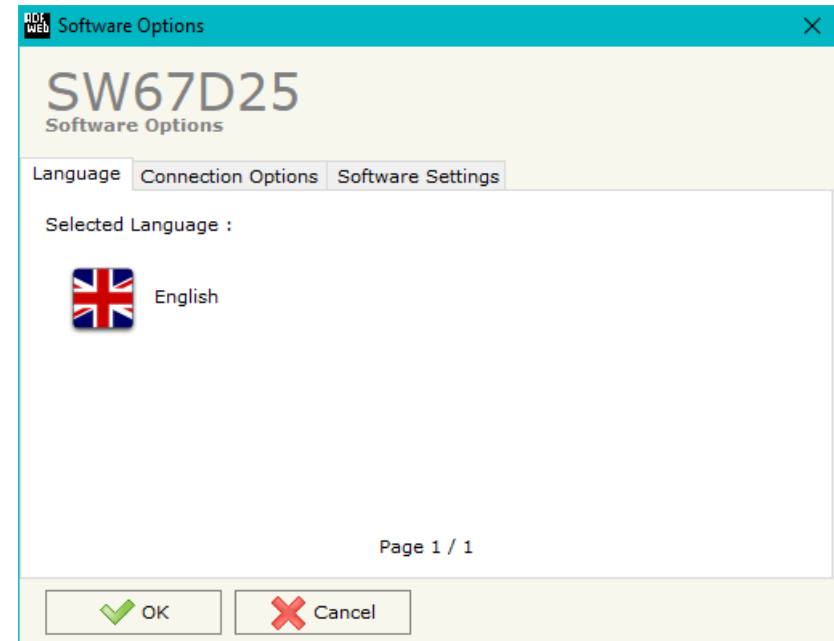
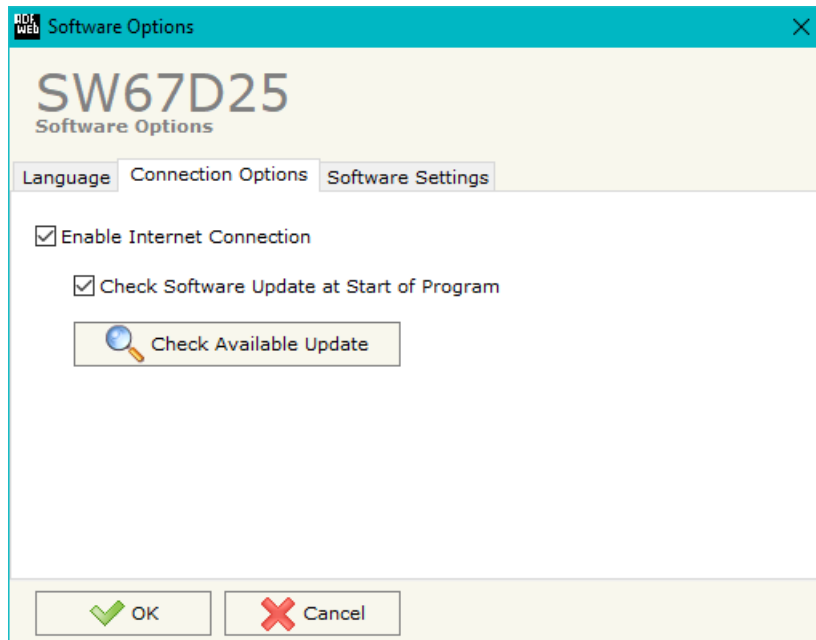
- To clone the configurations of a Programmable “LoRaWAN / EtherNet/IP Slave - Converter” in order to configure another device in the same manner, it is necessary to maintain the folder and all its contents;
- To clone a project in order to obtain a different version of the project, it is sufficient to duplicate the project folder with another name and open the new folder with the button “**Open Configuration**”.



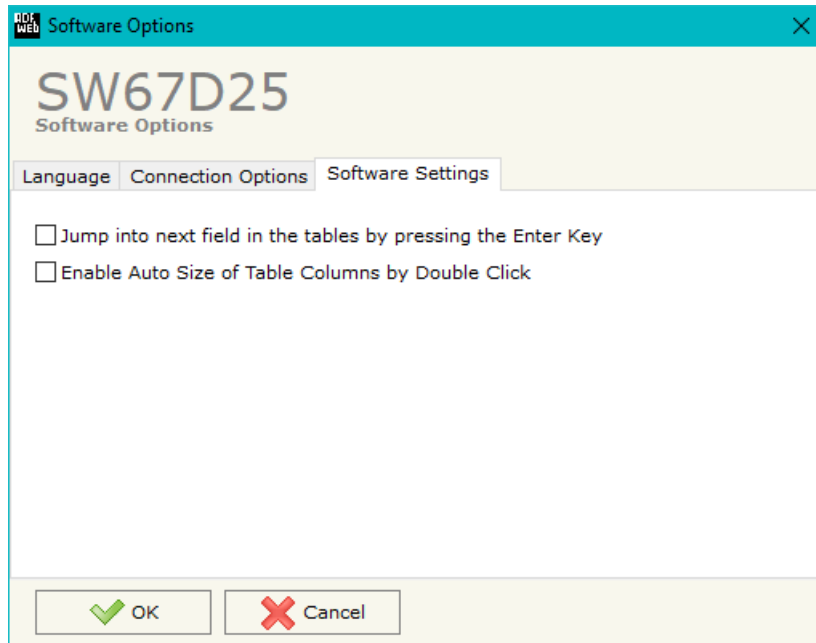
SOFTWARE OPTIONS:

By pressing the “**Settings**” () button there is the possibility to change the language of the software and check the updatings for the compositor.

In the section “Language” it is possible to change the language of the software.



In the section “Connection Options”, it is possible to check if there are some updatings of the software compositor in ADFweb.com website. Checking the option “**Check Software Update at Start of Program**”, the SW67D25 check automatically if there are updatings when it is launched.



In the section "Software Settings", it is possible to enable/disable some keyboard's commands for an easier navigation inside the tables contained in the different sections of the software.

SET COMMUNICATION:

By Pressing the **"Set Communication"** button from the main window for SW67D18 (Fig. 2) the window "Set Communication" appears (Fig. 3).

The means of the fields for the "LoRaWAN" section are:

- In the field **"RF Band"** the wireless band used for LoRaWAN communication is defined;
- In the field **"Network Type"** the type of LoRaWAN network is defined;
- If the field "Adaptive Data Rate" is checked, the converter will enable the ADR functionalities to select the best data rate to be used in relation to the environmental conditions;
- In the field **"Data Rate"** the data rate for LoRaWAN communication is defined;
- In the field **"Transmission Type"** the type of LoRaWAN communication is defined;
- In the field **"Max Payload Size"** the maximum dimension of the LoRaWAN messages is defined (fixed in relation to the data rate selected);
- In the field **"Activation Method"** the method used to join into a LoRaWAN network is defined;
- In the field **"Device Address"** the device identifier (DevEUI) is defined (only for ABP method);
- In the field **"Application Identifier"** the application identifier (AppEUI) is defined (only for ABP method);
- In the field **"Network Session Key"** the key used for the communication with the LoRaWAN gateway (NwksKey) is defined (only for ABP method);
- In the field **"Application Session Key"** the key for encryption and decryption of the payload (AppSKey) is defined (only for ABP method);
- If OTAA method is selected, in the field **"Application Key"** the secret key for the dynamic activation of the converter in the LoRAWAN network is defined.

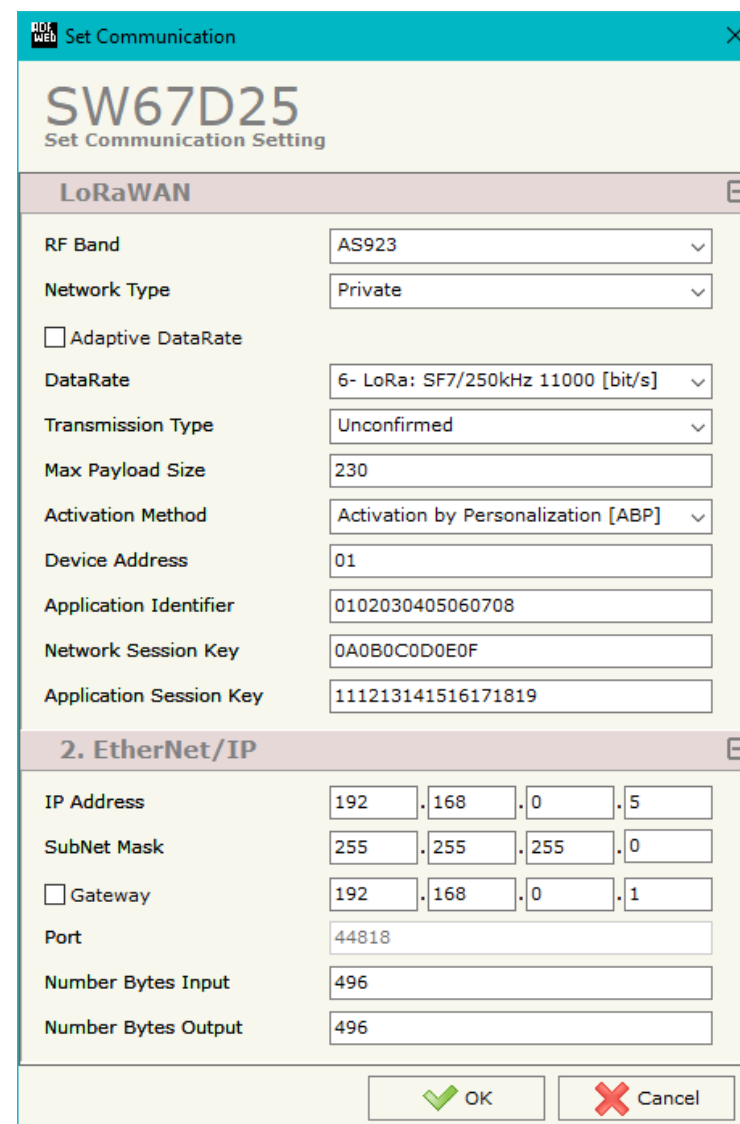


Figure 3: "Set Communication" window

The means of the fields for "EtherNet/IP" are:

- In the field "**IP Address**" the IP address for EtherNet/IP side of the converter is defined;
- In the field "**SubNet Mask**" the SubNet Mask for EtherNet/IP side of the converter is defined;
- In the field "**Gateway**" the default gateway of the net is defined. This feature can be enabled or disabled pressing the Check Box field. This feature is used for going out of the net;
- In the field "**Port**" the port used for EtherNet/IP communication is defined. The port has a fixed value of 44818.
- In the fields "**Number Byte IN**" the number of input byte of the slave station is defined;
- In the fields "**Number Byte Out**" the number of output byte of the slave station is defined.

LORAWAN ACCESS:

By Pressing the “**LoRaWAN Access**” button from the main window for SW67D25 (Fig. 2) the window “Set LoRaWAN Access” appears (Fig. 4). This section is used to define the LoRAWAN messages where the converter will place the data read from Ethernet/IP (Uplink) and the LoRAWAN messages that the converter will take (Downlink) for writing the data to Ethernet/IP.

LoRAWAN UPLINK

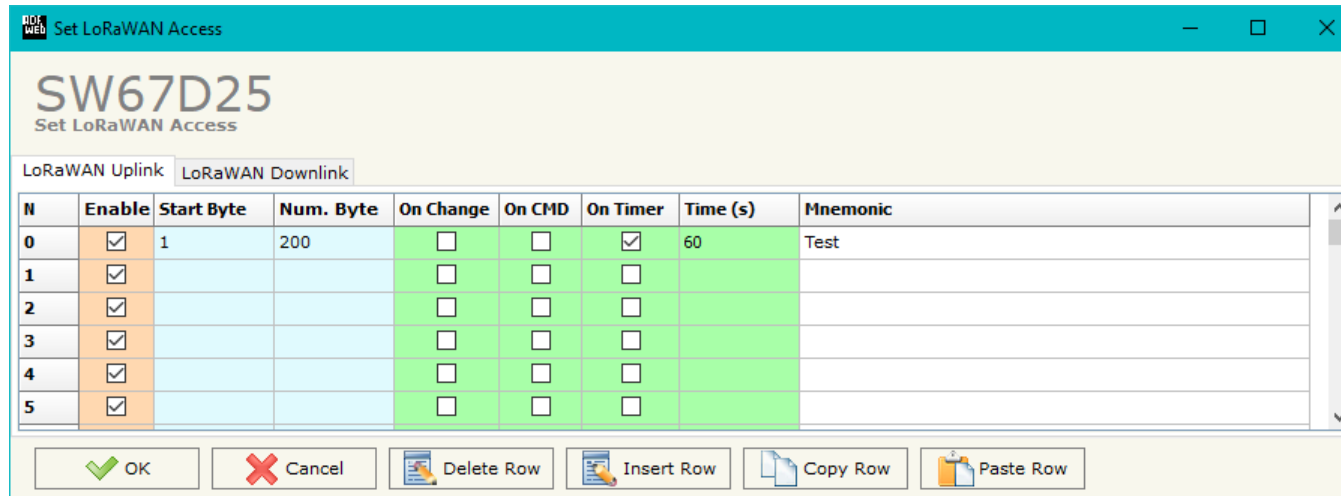


Figure 4a: “LoRaWAN Access → LoRaWAN Uplink” window

The means of the fields are:

- If the field “**Enable**” is checked, the LoRaWAN message is enabled;
- In the field “**Start Byte**” the starting byte of the internal memory array where taking the data is defined;
- In the field “**Num. Byte**” the number of consecutive bytes to take from the internal array starting from “Start Byte” is defined;
- If the field “**On Change**” is checked, the LoRaWAN message is sent only when the data from Ethernet/IP change;
- If the field “**On CMD**” is checked, the LoRaWAN message is sent when a Ethernet/IP request is received;
- If the field “**On Timer**” is checked, the LoRaWAN message is sent cyclically with the delay defined in “**Time (s)**” field;
- In the field “**Mnemonic**” a description of the message is defined.

LoRaWAN DOWNLINK

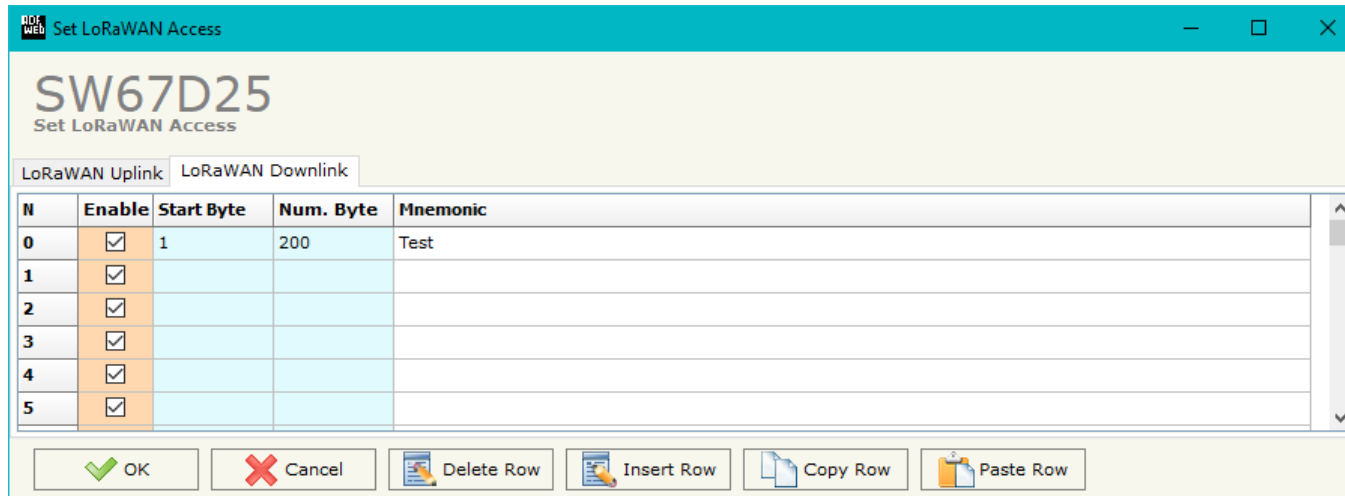


Figure 4b: "LoRaWAN Access → LoRaWAN Downlink" window

The means of the fields are:

- If the field "**Enable**" is checked, the LoRaWAN message is enabled;
- In the field "**Start Byte**" the starting byte of the internal memory array where placing the data is defined;
- In the field "**Num. Byte**" the number of consecutive bytes to write to the internal array starting from "Start Byte" is defined;
- In the field "**Mnemonic**" a description of the message is defined.

UPDATE DEVICE:

By pressing the **“Update Device”** button, it is possible to load the created Configuration into the device; and also the Firmware, if necessary. This by using the Ethernet port.

If you don't know the actual IP address of the device you have to use this procedure:

- Turn OFF the Device;
- Put Dip1 of 'Dip-Switch A' in ON position;
- Turn ON the device
- Connect the Ethernet cable;
- Insert the IP **“192.168.2.205”**;
- Select which operations you want to do;
- Press the **“Execute update firmware”** button to start the upload;
- When all the operations are “OK” turn OFF the Device;
- Put Dip1 of 'Dip-Switch A' in OFF position;
- Turn ON the device.

If you know the actual IP address of the device, you have to use this procedure:

- Turn ON the Device with the Ethernet cable inserted;
- Insert the actual IP of the Converter;
- Select which operations you want to do;
- Press the **“Execute update firmware”** button to start the upload;
- When all the operations are “OK” the device automatically goes at Normal Mode.

At this point the configuration/firmware on the device is correctly updated.

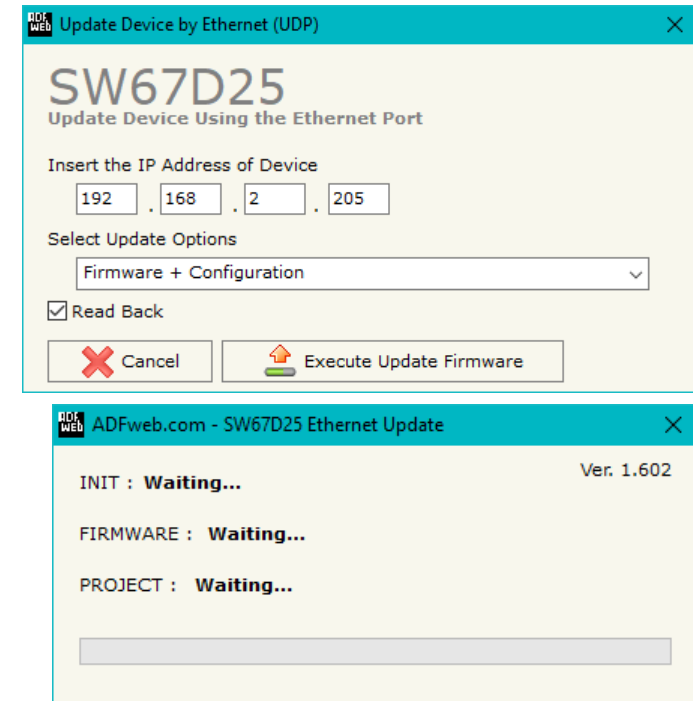


Figure 5: "Update device" windows

**Note:**

When you receive the device, for the first time, you also have to update the Firmware in the HD67D25 device.

**Warning:**

If Fig. 6 appears when you try to do the Update try these points before seeking assistance:

- Try to repeat the operations for the updating;
- Try with another PC;
- Try to restart the PC;
- Check the LAN settings;
- If you are using the program inside a Virtual Machine, try to use in the main Operating System;
- If you are using Windows Seven, Vista, 8 or 10 make sure that you have the administrator privileges;
- In case you have to program more than one device, using the "UDP Update", you have to cancel the ARP table every time you connect a new device on Ethernet. For do this you have to launch the "Command Prompt" and write the command "arp -d". Pay attention that with Windows Vista, Seven, 8, 10 you have to launch the "Command Prompt" with Administrator Rights;
- Pay attention at Firewall lock.

**Warning:**

In the case of HD67D25 you have to use the software "SW67D25": www.adfweb.com/download/filefold/SW67D25.zip.

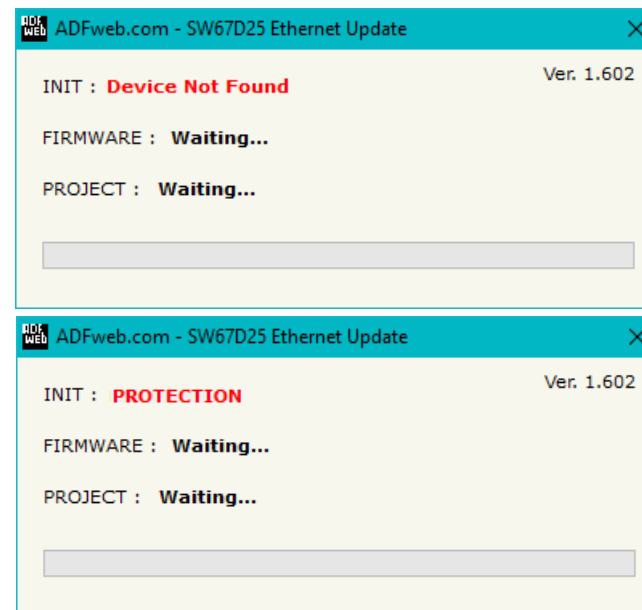


Figure 6: "Error" window

LORAWAN PAYLOAD

The LoRaWAN messages in Uplink and Downlink are structured into a defined format in order to recognize them from LoRaWAN gateway side and to understand to which bytes of the internal memory array they are associated.

The payload of the LoRaWAN messages is defined in Hex format:

- The first byte refers to the row of the tables defined into "LoRaWAN Access" section of SW67D25: it can have a value between 0 and 255 (0xFF);
- The following bytes will contain the data to be linked to the internal memory arrays of the converter (using "Start Byte" and "Num. Byte" of "LoRaWAN Access" section of SW67D25);

Example 1:

the converter is sending a LoRaWAN message related to row 4 of "LoRaWAN Access → LoRaWAN Uplink" table of "LoRaWAN Access" section of SW67D25 with a "Num. Byte" set of '4'. The data from these 4 bytes is "01 02 03 04" (hex).

The payload of the LoRaWAN message will look like "04 01 02 03 04" where:

- 04: index of the row of "LoRaWAN Access → LoRaWAN Uplink" table;
- 01 02 03 04: data taken from internal memory array of the converter.

Example 2:

The external LoRaWAN gateway needs to send a LoRaWAN message to the converter and link it to row 3 of "LoRaWAN Access → LoRaWAN Downlink" table of "LoRaWAN Access" section of SW67D25. The "Num. Byte" set is '4' and the data to be written is "55 66 77 88" (hex).

The payload of the LoRaWAN message will look like "03 55 66 77 88" where:

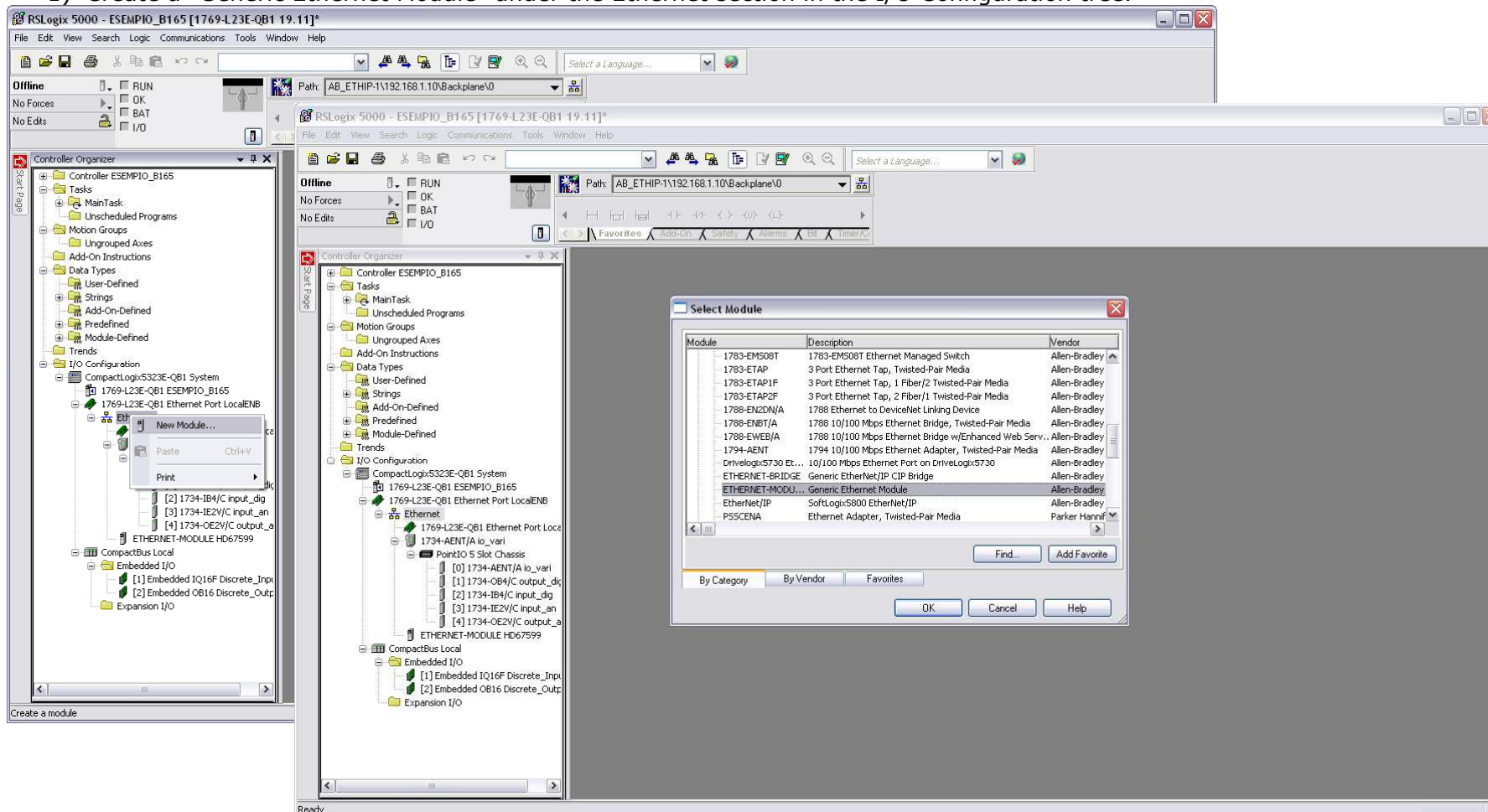
- 03: index of the row of "LoRaWAN Access → LoRaWAN Downlink" table;
- 55 66 77 88: data to be written to the internal memory array of the converter.

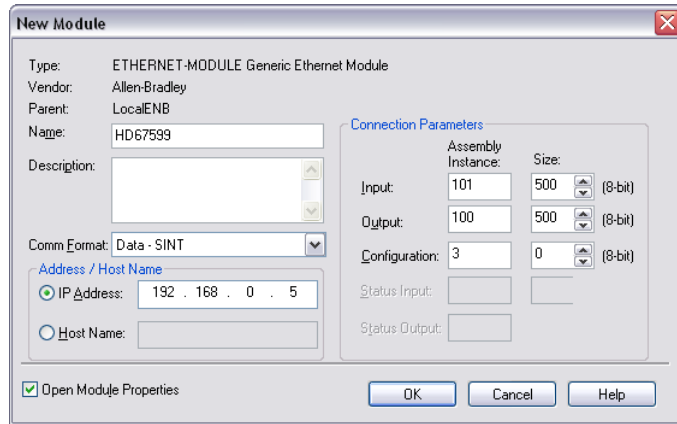
PLC CONFIGURATION:

The configuration and commissioning of the EtherNet/IP Converter as described on the following pages was accomplished with the help of the "RSLogix 5000" software of Rockwell Automation. In case of using a control system from another supplier please attend to the associated documentation.

These are the steps to follow:

- 1) Create a "Generic Ethernet Module" under the Ethernet section in the I/O Configuration tree.





2) Edit the settings of the new Generic Ethernet Module. As shown in the screen shot below, the module was named "HD67D25" and the IP-address assigned is 192.168.0.5.

For the Comm Format "Data - SINT" shall be selected as the data type.

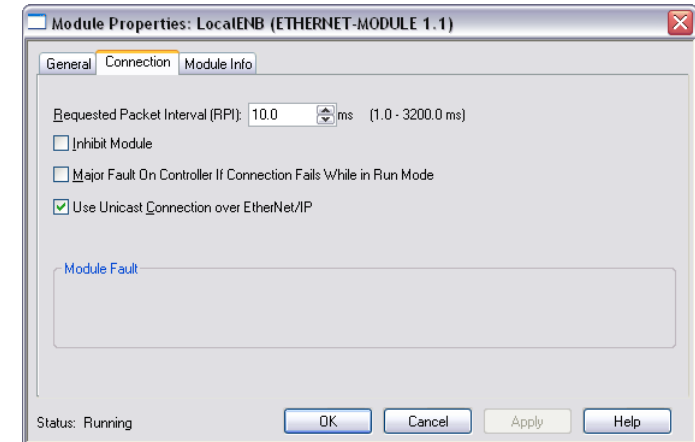
RSLogix 5000 requires a configuration assembly instance. Both modules do not provide a configuration assembly instance. Therefore it is allowed to select an instance of 3 and to set the value to zero.

3) The setting of 10msec for the "Requested Packet Interval (RPI)" is adequate but it is possible to change this value as required. A lower value of 2ms shall not be selected.



Warning:

The field "Use Unicast Connection over EtherNet/IP" must be checked.

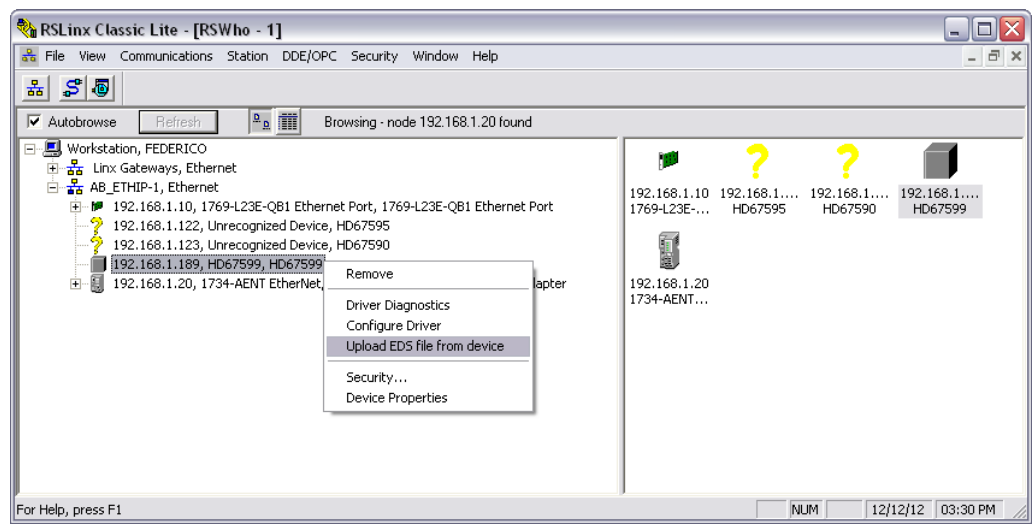


4) After the configuration is completed, the controller tags are created.

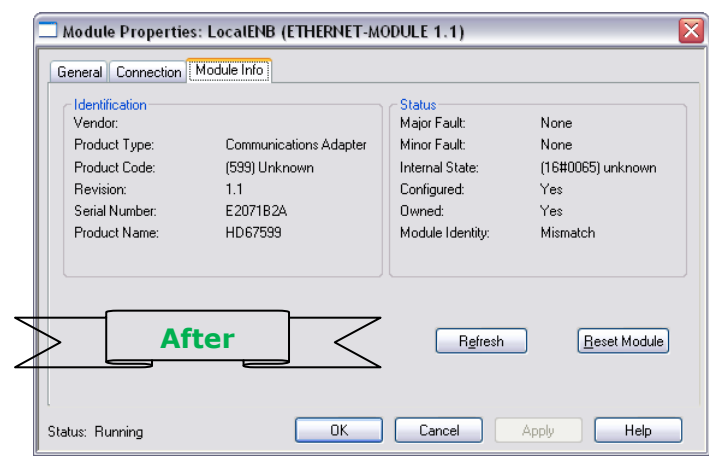
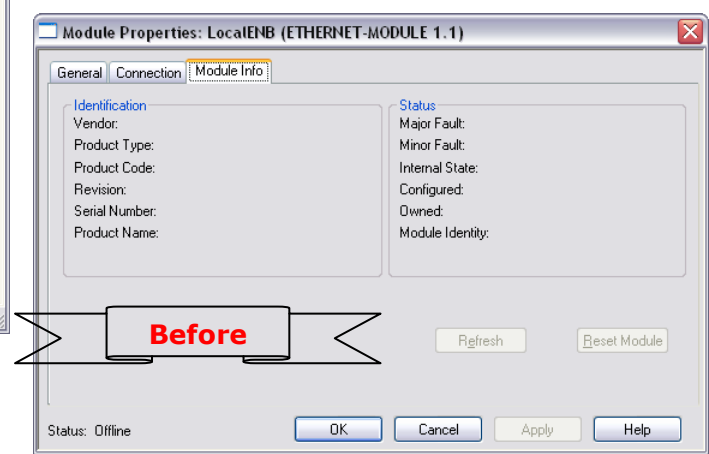
The screenshot shows the RSLogix 5000 software interface. The main window displays a table of Controller Tags for the ESEMPIO_B165 controller. The table has columns for Name, Value, Force Mask, Style, Data Type, Description, and Constant. The tags listed are:

Name	Value	Force Mask	Style	Data Type	Description	Constant
HD67591...	{...}	{...}	Decimal	SINT[500]		
HD67592...	0		Decimal	SINT		
HD67593...	0		Decimal	SINT		
HD67594...	0		Decimal	SINT		
HD67595...	0		Decimal	SINT		
HD67596...	0		Decimal	SINT		
HD67597...	0		Decimal	SINT		
HD67598...	0		Decimal	SINT		
HD67599...	0		Decimal	SINT		
HD6759A...	0		Decimal	SINT		
HD6759B...	0		Decimal	SINT		
HD6759C...	0		Decimal	SINT		
HD6759D...	0		Decimal	SINT		
HD6759E...	0		Decimal	SINT		
HD6759F...	0		Decimal	SINT		
HD67590...	0		Decimal	SINT		
HD67591...	0		Decimal	SINT		
HD67592...	0		Decimal	SINT		
HD67593...	0		Decimal	SINT		
HD67594...	0		Decimal	SINT		
HD67595...	0		Decimal	SINT		
HD67596...	0		Decimal	SINT		
HD67597...	0		Decimal	SINT		
HD67598...	0		Decimal	SINT		
HD67599...	0		Decimal	SINT		
HD6759A...	0		Decimal	SINT		
HD6759B...	0		Decimal	SINT		
HD6759C...	0		Decimal	SINT		
HD6759D...	0		Decimal	SINT		
HD6759E...	0		Decimal	SINT		
HD6759F...	0		Decimal	SINT		
HD67590...	0		Decimal	SINT		
HD67591...	0		Decimal	SINT		
HD67592...	0		Decimal	SINT		
HD67593...	0		Decimal	SINT		
HD67594...	0		Decimal	SINT		
HD67595...	0		Decimal	SINT		
HD67596...	0		Decimal	SINT		
HD67597...	0		Decimal	SINT		
HD67598...	0		Decimal	SINT		
HD67599...	0		Decimal	SINT		
HD6759A...	0		Decimal	SINT		
HD6759B...	0		Decimal	SINT		
HD6759C...	0		Decimal	SINT		
HD6759D...	0		Decimal	SINT		
HD6759E...	0		Decimal	SINT		
HD6759F...	0		Decimal	SINT		
HD67590...	0		Decimal	SINT		

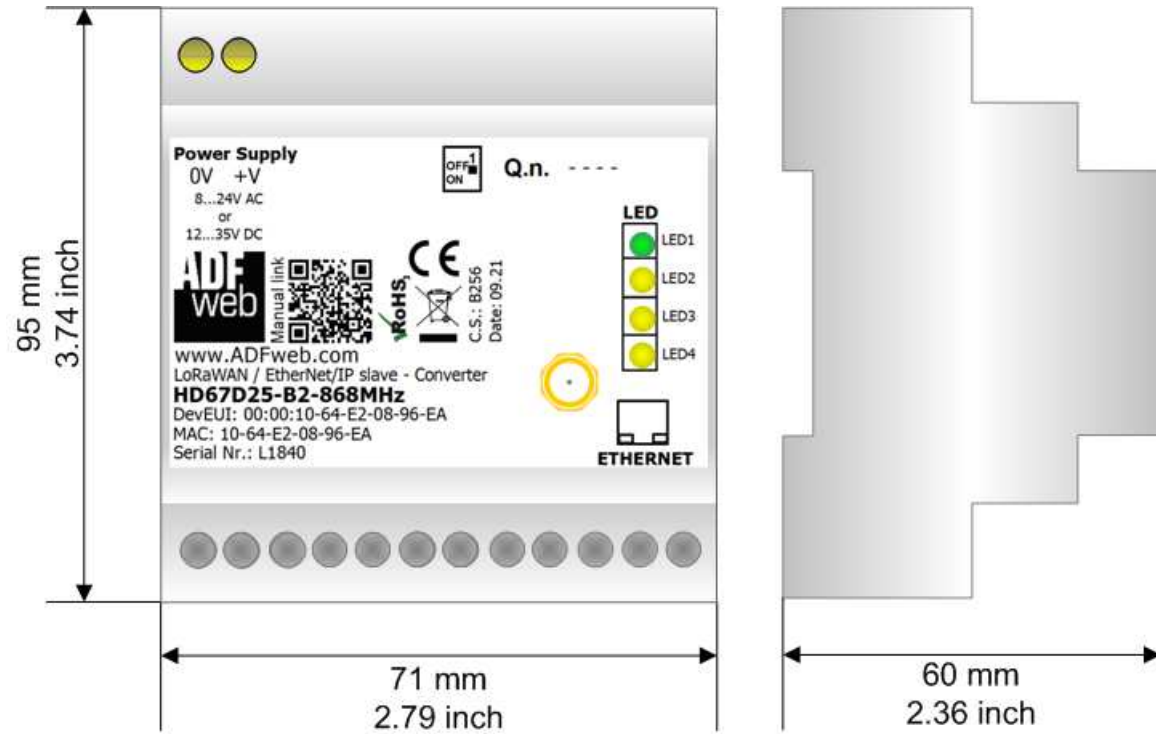
The interface also shows a Controller Organizer on the left and a Properties panel on the right. The status bar at the bottom indicates 'Monitor Tags' and 'Edit Tags'.



5) With "RSLinks Classic Lite", after have done a network scan (RSWho), and finding the EtherNet/IP device, it is possible to load the EDS file for the device in order to have the "Module Info" compiled.



MECHANICAL DIMENSIONS:



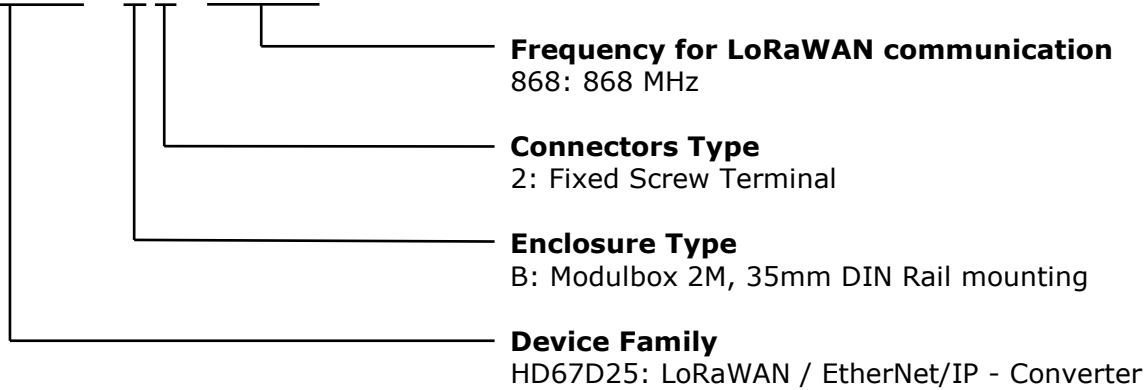
Housing: PVC
Weight: 200g (Approx)

Figure 7: Mechanical dimensions scheme for HD67D25-B2

ORDERING INFORMATIONS:

The ordering part number is formed by a valid combination of the following:

HD67D25 - B 2 - xxxMHz



Order Code: **HD67D25-B2-868MHz** - LoRaWAN / EtherNet/IP – Converter

ACCESSORIES:

Order Code: **AC34011** - 35mm Rail DIN - Power Supply 220/240V AC 50/60Hz – 12 V DC

Order Code: **AC34012** - 35mm Rail DIN - Power Supply 220/240V AC 50/60Hz – 24 V DC

DISCLAIMER:

All technical content within this document can be modified without notice. The content of the document is a under continual renewal. For losses due to fire, earthquake, third party access or other accidents, or intentional or accidental abuse, misuse, or use under abnormal conditions repairs are charged to the user. ADFweb.com S.r.l. will not be liable for accidental loss of use or inability to use this product, such as loss of business income. ADFweb.com S.r.l. shall not be liable for consequences of improper use.

OTHER REGULATIONS AND STANDARDS:**WEEE INFORMATION**

Disposal of old electrical and electronic equipment (as in the European Union and other European countries with separate collection systems).

— This symbol on the product or on its packaging indicates that this product may not be treated as household rubbish. Instead, it should be taken to an applicable collection point for the recycling of electrical and electronic equipment. If the product is disposed correctly, you will help prevent potential negative environmental factors and impact of human health, which could otherwise be caused by inappropriate disposal. The recycling of materials will help to conserve natural resources. For more information about recycling this product, please contact your local city office, your household waste disposal service or the shop where you purchased the product.

RESTRICTION OF HAZARDOUS SUBSTANCES DIRECTIVE

The device respects the 2002/95/EC Directive on the restriction of the use of certain hazardous substances in electrical and electronic equipment (commonly referred to as Restriction of Hazardous Substances Directive or RoHS).

CE MARKING

The product conforms with the essential requirements of the applicable EC directives.

WARRANTIES AND TECHNICAL SUPPORT:

For fast and easy technical support for your ADFweb.com SRL products, consult our internet support at www.adfweb.com.
Otherwise contact us at the address support@adfweb.com

RETURN POLICY:

If while using your product you have any problem and you wish to exchange or repair it, please do the following:

- Obtain a Product Return Number (PRN) from our internet support at www.adfweb.com. Together with the request, you need to provide detailed information about the problem.
- Send the product to the address provided with the PRN, having prepaid the shipping costs (shipment costs billed to us will not be accepted).

If the product is within the warranty of twelve months, it will be repaired or exchanged and returned within three weeks. If the product is no longer under warranty, you will receive a repair estimate.



ADFweb.com S.r.l.
Via Strada Nuova, 17
IT-31010 Mareno di Piave
TREVISO (Italy)
Phone +39.0438.30.91.31
Fax +39.0438.49.20.99
www.adfweb.com

